

Product Data Sheet: Conjugated anti-phospho-PI3 Kinase p85 (Tyr458)/p55 (Tyr199) FITC rabbit mAb

Catalog Number:	2068
Clone:	PI3KY458-1A11
Isotype:	Rabbit IgG1κ
Immunogen:	A synthetic phospho-peptide corresponding to residues surrounding Tyr458 of human phospho PI3K p85
Reactivity:	Mouse, Human
Cross Reactivity:	Predicted to work with mouse, rat, and other homologues.
Preparation:	Protein A+G
Formulation:	1X PBS, 0.09% NaN ₃ , 0.2% BSA
Applications:	Flow Cytometry
Recommended Usage:	For flow cytometric staining, the suggested use of this reagent is 5 μl per million cells or 5 μl per 100 μl of staining volume. It is recommended that the reagent be titrated for optimal performance for each application
Product Configuration:	100 tests
Detection:	Anti-Rabbit IgG

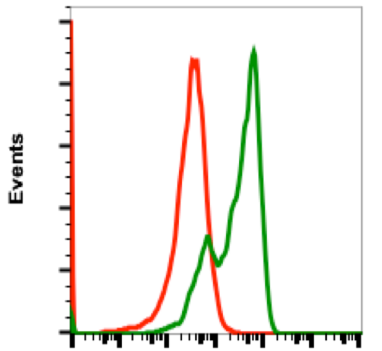
Description

Phosphoinositide 3-kinase (PI3K, phospho PI3K) Binds to activated (phosphorylated) protein-Tyr kinases, through its SH2 domain, and acts as an adapter, mediating the association of the p110 catalytic unit to the plasma membrane. Phospho PI3K is necessary for the insulin-stimulated increase in glucose uptake and glycogen synthesis in insulin-sensitive tissues. During insulin stimulation, it also binds to IRS-1. Growth factors and hormones trigger this phosphorylation event, which in turn coordinates cell growth, cell cycle entry, cell migration, and cell survival.

References

1. Cantley, L.C. (2002) Science 296, 1655-7.
2. Simpson, L. and Parsons, R. (2001) Exp Cell Res 264, 29-41.
3. Neri, L.M. et al. (2002) Biochim Biophys Acta 1584, 73-80.

Conjugated anti-phospho-PI3 Kinase p85 (Tyr458)/p55 (Tyr199) FITC rabbit mAb Images



Phospho-PI3K p85(Y458)/p55(Y199)

Flow cytometric analysis of Ramos cells, untreated (red) or treated with pervanadate (green) using Phospho-PI3 Kinase p85 (Tyr458)/p55 (Tyr199) FITC conjugated antibody PI3KY458-1A11. Cat. #2068.