

Product Data Sheet: Purified anti-phospho-Stat6 (Tyr641) rabbit mAb

Catalog Number:	1146
Clone:	Stat6Y641-G12
Isotype:	Rabbit IgG1κ
Immunogen:	A synthetic phospho-peptide corresponding to residues surrounding Tyr641 of human phospho Stat6
Reactivity:	Mouse, Human
Cross Reactivity:	Predicted to work with mouse, rat and other homologues.
Preparation:	Protein A+G
Formulation:	1X PBS, 0.02% NaN ₃ , 50% Glycerol, 0.1% BSA
Applications:	WB, Flow Cytometry
Recommended Usage:	1.0 - 0.1 µg/ml. Optimum concentration should be determined by the user.
Product Configuration:	200 ul (0.5mg/ml, more than 200 western blots)
Detection:	Anti-Rabbit IgG

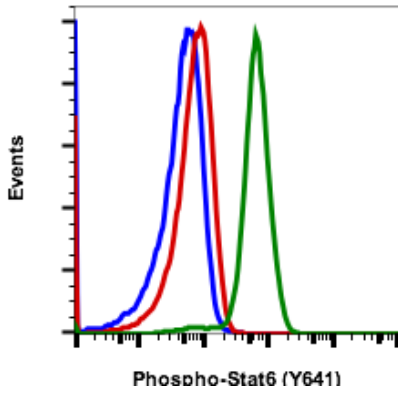
Description

Stat6 is a human protein encoded by the STAT6 gene and is a member of the STAT family of transcription factors. In response to cytokines and growth factors, STAT family members are phosphorylated by receptor associated kinases, and then form homo- or heterodimers that translocate to the cell nucleus where they act as transcription activators. Phospho Stat6 plays a central role in exerting IL-4 and IL-13-mediated biological responses. In addition, Stat6 is activated by IFN α in B cell lines, where phospho Stat6 forms transcriptionally active complexes with Stat2 and p48. Stat6 has been found to induce the expression of BCL2L1/BCL-X(L), which is responsible for the anti-apoptotic activity of IL-4. Knockout studies in mice suggested the roles of this gene in differentiation of T helper 2 (Th2) cells, expression of cell surface markers, and IgG class switching.

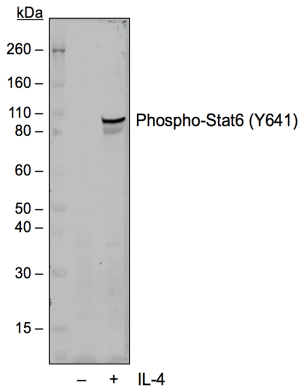
References

1. Leek JP. et al., (1997) Cytogenet. Cell Genet. 79: 208-9.
2. Hou J. et al., (1994) Science. 265: 1701-6.
3. Nelms, K. et al., (1999) Ann. Rev. Immunol. 17: 701-738.
4. Malabarba, M.G. et al., (1996) Biochem. J. 319: 865-872.
5. Hou, J. et al., (1994) Science. 265: 1701-1706.
6. Quelle, F.W. et al., (1995) Mol. Cell. Biol. 15: 3336-3343.
7. Takeda, K. et al., (1996) Nature. 380: 627-630.
8. Gupta, S. et al., (1999) J. Immunol. 163: 3834-3841.

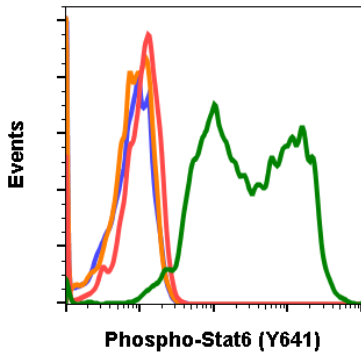
Purified anti-phospho-Stat6 (Tyr641) rabbit mAb Images



Flow cytometric analysis of U937 cells, secondary antibody only negative control (blue) or untreated (red) or treated with IFN α and IL-4 (green) using 0.1 μ g/mL Phospho-Stat6 (Tyr641) antibody Stat6Y641-G12. Cat. #1146.



Western blot analysis of Daudi cell extract, untreated or treated with IL-4 using 0.01 μ g/mL Phospho-Stat6 (Tyr641) antibody Stat6Y641-G12. Cat. #1146.



Flow cytometric analysis of NIH3T3 cells, secondary antibody only negative control (blue) or 0.1 μ g/mL of isotype control Cat. #2141 (orange), or treated with imatinib (red) or with pervanadate (green) using Phospho-Stat6 (Tyr641) antibody Stat6Y641-G12 at 0.1 μ g/mL. Cat #1146.