

Product Data Sheet: Purified anti-phospho-Rb (Ser807/Ser811) rabbit mAb

Catalog Number:	2051
Clone:	RbS807S811-D9
Isotype:	Rabbit IgG1κ
Immunogen:	A synthetic phospho-peptide corresponding to residues surrounding Ser807/Ser811 of human phospho Rb
Reactivity:	Mouse,Human
Cross Reactivity:	Predicted to work with mouse, rat and other homologues.
Preparation:	Protein A+G
Formulation:	1X PBS, 0.02% NaN ₃ , 50% Glycerol, 0.1% BSA
Applications:	WB,Flow Cytometry
Recommended Usage:	1.0 - 0.1 µg/ml. Optimum concentration should be determined by the user.
Product Configuration:	200 ul (0.5mg/ml, more than 200 western blots)
Detection:	Anti-Rabbit IgG

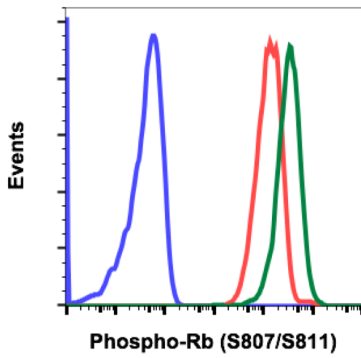
Description

Retinoblastoma protein (Rb, phospho Rb) is a tumor suppressor protein that is inactivated in a number of diverse cancers. The antiproliferative activity of Rb is mediated by its ability to inhibit the transcription of genes that are required for cell cycle progression. Rb contains conserved sites that are phosphorylated by cyclin-dependent kinases (CDKs). CDK phosphorylation typically promotes protein-protein interactions through creation of a phospho-epitope that becomes structured upon binding its target. However Rb phosphorylation disrupts interactions with its binding partners. When it is phosphorylated, phospho Rb is inactivated and allows excessive cell growth that is seen in cancer cells. Sixteen potential sites for CDK-mediated phosphorylation exist in Rb and twelve of these sites have been shown to be phosphorylated *in vivo*.

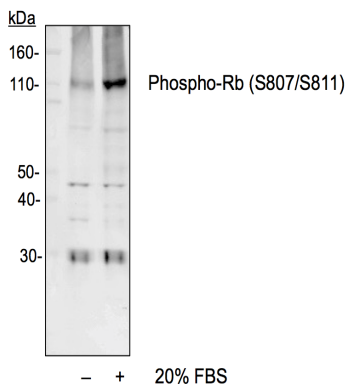
References

1. Burkhardt DL et al., (2008) Nat Rev Cancer. 8:671–682.
2. Knudsen ES (2008) Nat Rev Cancer. 8:714–724.
3. Mittnacht S. (1998) Curr Opin Genet Dev. 8:21–27.
4. Weinberg RA. (1995) 81:323–330.
5. Henley SA et al., (2012) Cell Div., 7:10.

Purified anti-phospho-Rb (Ser807/Ser811) rabbit mAb Images



Flow cytometric analysis of Jurkat cells, secondary antibody only negative control (blue) or untreated (red) or treated with calyculin A (green) using Phospho-Rb (Ser807/Ser811) antibody RbS807S811-D9. Cat. #2051.



Western blot analysis of NIH3T3 cell extract, untreated or treated with 20% FBS using Phospho-Rb (Ser807/Ser811) antibody RbS807S811-D9 at 0.1 µg/mL. Cat. #2051.