

Product Data Sheet: Conjugated anti-phospho-PLC γ 2 (Tyr759) PE rabbit mAb

Catalog Number:	1167
Clone:	PLCG2Y759-G3
Isotype:	Rabbit IgG1 κ
Immunogen:	A synthetic phospho-peptide corresponding to residues surrounding Tyr759 of human phospho PLC γ 2.
Reactivity:	Mouse, Human
Cross Reactivity:	Predicted to work with mouse, rat, and other homologues.
Preparation:	Protein A+G
Formulation:	1X PBS, 0.09% NaN ₃ , 0.2% BSA
Applications:	Flow Cytometry
Recommended Usage:	For flow cytometric staining, the suggested use of this reagent is 5 μ l per million cells or 5 μ l per 100 μ l of staining volume. It is recommended that the reagent be titrated for optimal performance for each application
Product Configuration:	100 tests
Detection:	Anti-Rabbit IgG

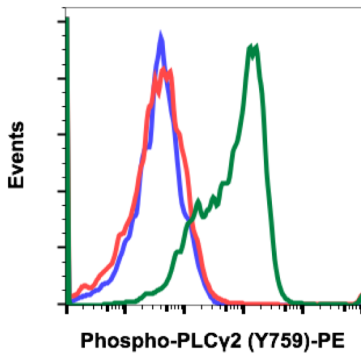
Description

The Phospholipase C (PLC) isozymes hydrolyze phosphatidyl inositolphosphate to inositol triphosphate and diacylglycerol. In response to extracellular stimuli such as hormones, growth factors and neurotransmitters, PLC hydrolyzes phosphatidylinositol 4,5-bisphosphate (PIP₂) to generate diacylglycerols (DAGs) and water-soluble phosphorylated derivatives, such as inositol 1,4,5-triphosphate (IP₃). Within the PLC family, PLC γ is the only member that contains SH2 and SH3 domains, necessary for phospho PLC γ activation. Phospho PLC γ , upon activation, can interact with receptor tyrosine kinases.

References

1. Singer, W.D. et al. (1997) Annu. Rev. Biochem. 66, 475–509.
2. Hernandez D, et al. (1994) Genomics 23 (2): 504–7.
3. Smrcka, A.V. et al. (1991) Science 251, 804–807.
4. Taylor, S.J. et al. (1991) Nature 350, 516–518.

Conjugated anti-phospho-PLC γ 2 (Tyr759) PE rabbit mAb Images



Flow cytometric analysis of Ramos cells, unstained cells negative control (blue), or stained and untreated (red) or treated with pervanadate (green) using Phospho-PLC γ 2 (Tyr759) PE conjugate antibody PLCG2Y759-G3. Cat. #1167.