

## Product Data Sheet: Purified anti-phospho-Src (Tyr416) rabbit mAb

<b>Catalog Number:</b>	2071
<b>Clone:</b>	SrcY416-C4
<b>Isotype:</b>	Rabbit IgG1κ
<b>Immunogen:</b>	A synthetic phospho-peptide corresponding to residues surrounding Tyr416 of human phospho Src
<b>Reactivity:</b>	Mouse, Human
<b>Cross Reactivity:</b>	Predicted to work with mouse, rat and other homologues.
<b>Preparation:</b>	Protein A+G
<b>Formulation:</b>	1X PBS, 0.02% NaN <sub>3</sub> , 50% Glycerol, 0.1% BSA
<b>Applications:</b>	Flow Cytometry
<b>Recommended Usage:</b>	1.0 - 0.1 µg/ml. Optimum concentration should be determined by the user.
<b>Product Configuration:</b>	200 ul (0.5mg/ml)
<b>Detection:</b>	Anti-Rabbit IgG

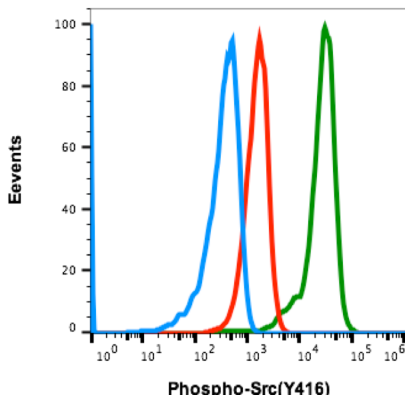
### Description

Src is a non-receptor tyrosine kinase involved in signal transduction and is also implicated in human tumor development. The Src family of tyrosine kinases are important in eukaryotic cell growth regulation and differentiation. Src activity is regulated by tyrosine phosphorylation at two sites, but with opposite effects. Phosphorylation at Tyr416 in the activation loop of the kinase domain upregulates phospho Src activity, while phosphorylation at Tyr527 in the carboxy-terminal tail decreases activity. It should be noted that the activation loop of phospho Src is highly conserved in all of the related Src-family kinases.

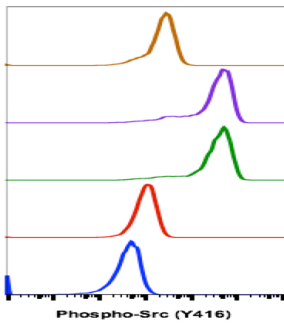
### References

1. Thomas, S.M. and Brugge, J.S. (1997) Annu. Rev. Cell Dev. Biol. 13: 513-609.
2. Hunter, T. (1987) Cell. 49: 1-4.
3. Boggon, T.J. and Eck, M.J. (2004) Oncogene. 23: 7918-27.

### Purified anti-phospho-Src (Tyr416) rabbit mAb Images

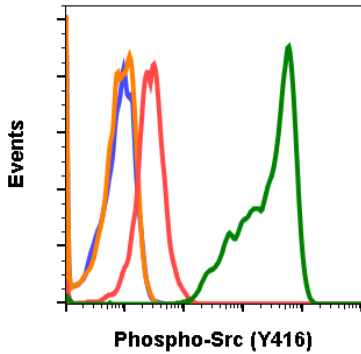


Flow cytometric analysis of U937 cells, secondary antibody only negative control (blue) or untreated (red) or treated with IFN $\alpha$ , IL4 and pervanadate (green) using 0.01  $\mu$ g/mL Phospho-Src (Tyr416) antibody SrcY416-C4. Cat. #2071.



Flow cytometric analysis of U937 cells, secondary antibody only negative control (blue) or untreated (red), treated with IFN $\alpha$ , IL4 and pervanadate (green) or treated + blocked with non-phospho-peptide (purple) or treated + blocked with phospho-peptide (brown) using 0.01  $\mu$ g/mL Phospho-Src (Tyr416) antibody SrcY416-C4. Cat. #2071.

SWELLID	Treatment	Median: BL1-A
C4 0.01 ug/mL+PP	IFN $\alpha$ IL4 PV	2370
C4 0.01 ug/mL+NP	IFN $\alpha$ IL4 PV	35903
C4 0.01 ug/mL	IFN $\alpha$ IL4 PV	36147
C4 0.01 ug/mL	Ctrl	1003
2'Ab	Ctrl	413



Flow cytometric analysis of NIH3T3 cells, secondary antibody only negative control (blue) or 0.1  $\mu$ g/mL of isotype control Cat. #2141 (orange), or treated with imatinib (red) or with pervanadate (green) using Phospho-Src (Tyr416) antibody SrcY416-C4 at 0.1  $\mu$ g/mL. Cat #2071.