

Product Data Sheet: Purified anti-phospho-ATF2 (Thr71) rabbit mAb

Catalog Number:	2056
Clone:	ATF2T71-G3
Isotype:	Rabbit IgG1κ
Immunogen:	A synthetic phospho-peptide corresponding to residues surrounding Thr71 of human phospho ATF2
Reactivity:	Mouse, Human
Cross Reactivity:	Predicted to work with mouse, rat and other homologues.
Preparation:	Protein A+G
Formulation:	1X PBS, 0.02% NaN ₃ , 50% Glycerol, 0.1% BSA
Applications:	WB, Flow Cytometry
Recommended Usage:	1.0 - 0.1 µg/ml. Optimum concentration should be determined by the user.
Product Configuration:	200 ul (0.5mg/ml, more than 200 western blots)
Detection:	Anti-Rabbit IgG

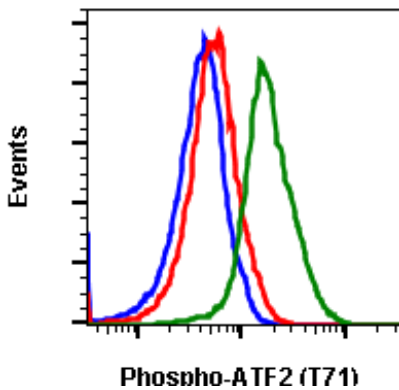
Description

Activating transcription factor 2, also known as phospho ATF2, is a protein that, in humans, is encoded by the ATF2 gene. Transcriptional activator, probably constitutive, which binds to the cAMP-responsive element (CRE) (consensus: 5'-GTGACGT[AC][AG]-3'), a sequence present in many viral and cellular promoters. Interaction with JUN redirects JUN to bind to CREs preferentially over the 12-O-tetradecanoylphorbol-13-acetate response elements (TREs) as part of an ATF2/JUN complex. Cellular stress phosphorylates Thr69 and Thr71 and activates phospho ATF-2.

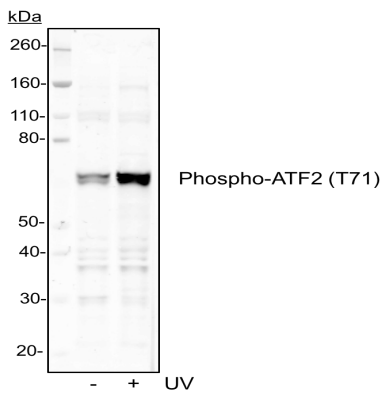
References

1. Kawasaki H, et al. (2000) Nature 405:195-200.
2. Bhoumik A, et al. Ronai Z. (2005) Mol. Cell 18:577-87.
3. Bhoumik A, et al. (2008) J. Biol. Chem. 283:17605-14.
4. Lau E, et al., (2012) Cell 148: 543-55.

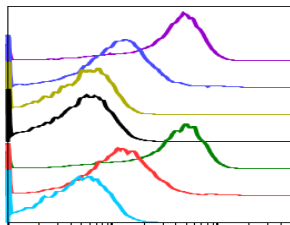
Purified anti-phospho-ATF2 (Thr71) rabbit mAb Images



Flow cytometric analysis of Jurkat cells, secondary antibody only negative control (blue) or untreated (red) or treated with anisomycin (green) using Phospho-ATF-2 (Thr71) antibody ATF2T71-G3 at 0.1 µg/mL. Cat #2056.

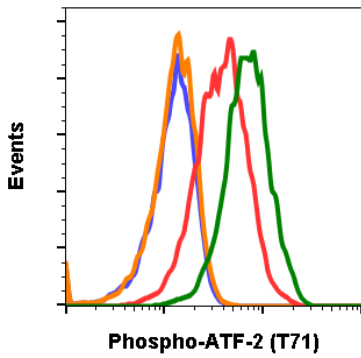


Western blot analysis of 293T cell extract, untreated or treated with UV using 0.1 µg/mL Phospho-ATF-2 (Thr71) antibody ATF2T71-G3. Cat. #2056.



Peptide blocking flow cytometric analysis of Jurkat cells, secondary antibody only negative control (light blue) or untreated (red) or anisomycin-treated (green) or untreated and blocked with phospho-peptide (black) or anisomycin and blocked with phospho peptide (gold) or untreated and blocked with non-phospho peptide (dark blue) or anisomycin and blocked with non-phospho peptide (purple) Phospho-ATF-2 (Thr71) antibody ATF2T71-G3 at 0.1µg/mL. Cat. #2056.

SampleID	Median : BL1.A
Aniso G3 N	4025
Ctrl G3 N	1080
Aniso G3 P	440
Ctrl G3 P	401
Aniso G3	4025
Ctrl G3	1098
Ctrl 2' only	319



Flow cytometric analysis of NIH3T3 cells, secondary antibody only negative control (blue) or 0.1 $\mu\text{g}/\text{mL}$ of isotype control Cat. #2141 (orange), or untreated (red) or treated with UV and PMA (green) using Phospho-ATF-2 (Thr71) antibody ATF2T71-G3 at 0.1 $\mu\text{g}/\text{mL}$. Cat #2056.