

Phospho-CD22 (Tyr822) (8SR6-F8) rabbit mAb

www.abwizbio.com

Support: info@abwizbio.com

Order: sales@abwizbio.com

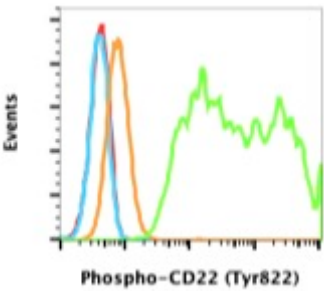
Catalog: #2820

Store at: -20°C

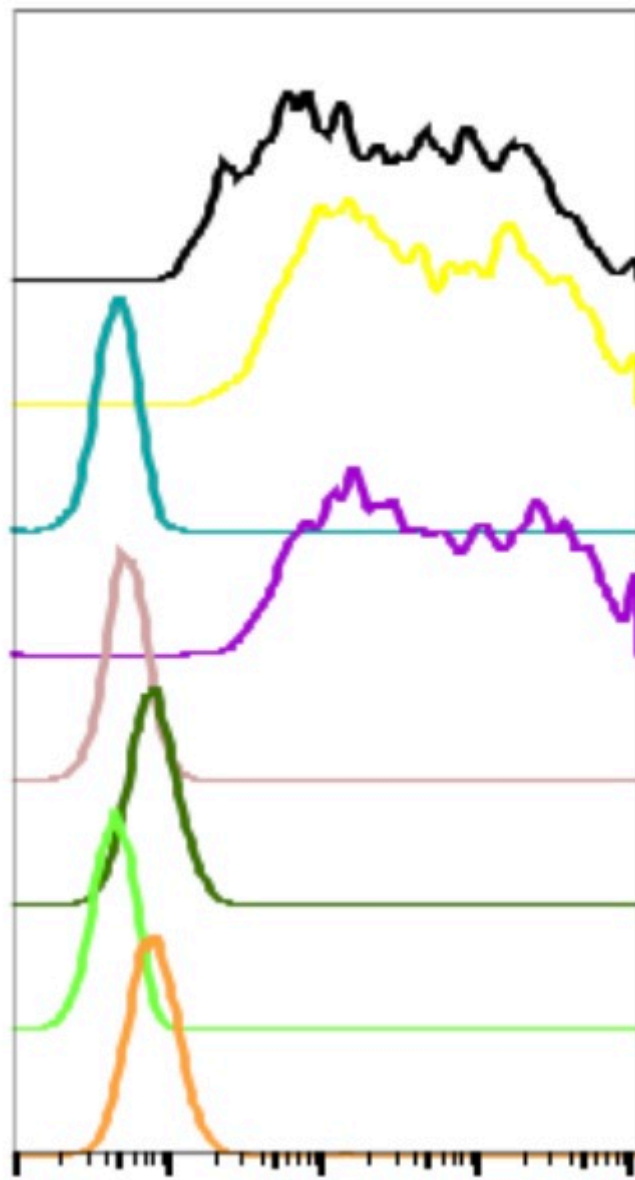
For Research Use Only. Not For Use In Diagnostic Procedures.

Applications	Detection	Clonality	Isotype
Flow Cytometry	Anti-Rabbit IgG	Monoclonal	Rabbit IgGκ

Format:	Unconjugated
Cross Reactivity:	Predicted to work with mouse, rat and other homologues.
Formulation:	PBS, 0.02% NaN ₃ , 50% Glycerol, 0.1% BSA
Preparation:	Protein A
Reactivity:	Human, Mouse
Recommended Usage:	For flow cytometric staining, the suggested use of this reagent is 5 µL per million cells or 5 µL per 100 µL of staining volume. It is recommended that the reagent be titrated for optimal performance for each application. See product image legends for additional information.
Immunogen:	A synthetic phospho-peptide corresponding to residues surrounding Tyr822 of human phospho CD22
Description:	
References:	<ol style="list-style-type: none">1. Domer T, et al., (2015) Int Revs Immunol 31:363-378.2. Otipoby KL, et al., (2001) J Bio Chem 276:44315-44322.3. Poe JC., Et al., (2000) J Biol Chem, 275: 17420-17427.



Flow cytometry analysis of Ramos cells untreated (brown) or treated with PV (green) and stained using phosphorus-CD22 (Tyr822) CD22Y822-8RS6-F8 Cat#2820 or concentration matched isotope control Cat# 2141 for cells untreated (red) or treated with PV (blue).



Phospho-CD22 (Y822)

Peptide blocking flow cytometry analysis of Ramos cells untreated (brown) or treated with Pervanadate PV (purple) or untreated (green) or PV treated (cyan) and blocked with phosphorus-peptide or untreated (dark green) or treated with PV (yellow) and blocked with non-phospho-peptide, and untreated (light brown) or treated with PV (black) and blocked with non-specific phospho-peptide using Phospho-CD22 (Tyr822) antibody CD22Y822- 8SR6-F8 at 0.1 ug/mL. Cat# 2820.