

# Phospho-Tec (Tyr519) (1BR5-A3) rabbit mAb

[www.abwizbio.com](http://www.abwizbio.com)

Support: [info@abwizbio.com](mailto:info@abwizbio.com)

Order: [sales@abwizbio.com](mailto:sales@abwizbio.com)

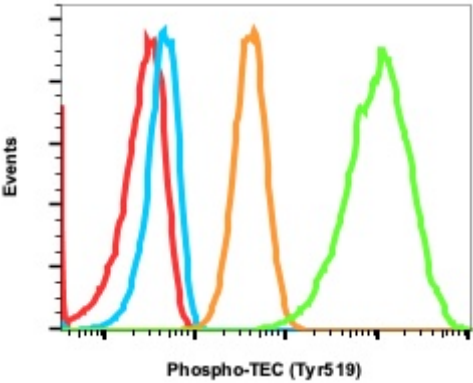
**Catalog:** #2816

**Store at:** -20°C

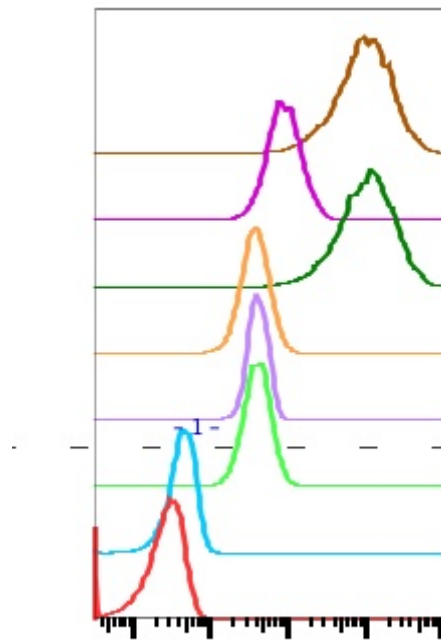
*For Research Use Only. Not For Use In Diagnostic Procedures.*

Applications	Detection	Clonality	Isotype
Flow Cytometry, WB	Anti-Rabbit IgG	Monoclonal	Rabbit IgGk

<b>Format:</b>	Unconjugated
<b>Cross Reactivity:</b>	Predicted to work with mouse, rat and other homologues.
<b>Formulation:</b>	1X PBS, 0.02% NaN <sub>3</sub> , 50% Glycerol, 0.1% BSA
<b>Preparation:</b>	Protein A
<b>Reactivity:</b>	Human, Mouse
<b>Recommended Usage:</b>	1µg/mL - 0.001µg/mL. It is recommended that the reagent be titrated for optimal performance for each application. See product image legends for additional information.
<b>Immunogen:</b>	A synthetic phospho-peptide corresponding to residues surrounding Tyr519 of human phospho Tec
<b>Description:</b>	
<b>References:</b>	<ol style="list-style-type: none"><li>1. Felices M et al., 2007, Adv Immunol 93, 145-184.</li><li>2. Ortutary C et al., 2008, Adv Genet 64: 51-80.</li><li>3. Yamada N et al., 1993, Biochem Biophys Res Commun 192: 231-240.</li><li>4. Tsukada S et al., 1993, Cell 72:279-290.</li><li>5. Yamada N et al., 1993, Biochem Biophys Res Commun 192: 231-240.</li><li>6. Haire RN et al., 1994, Hum Mol Genet 3:897-901.</li><li>7. Mano H et al., 1990, Oncogene 5:1781-1786.</li></ol>

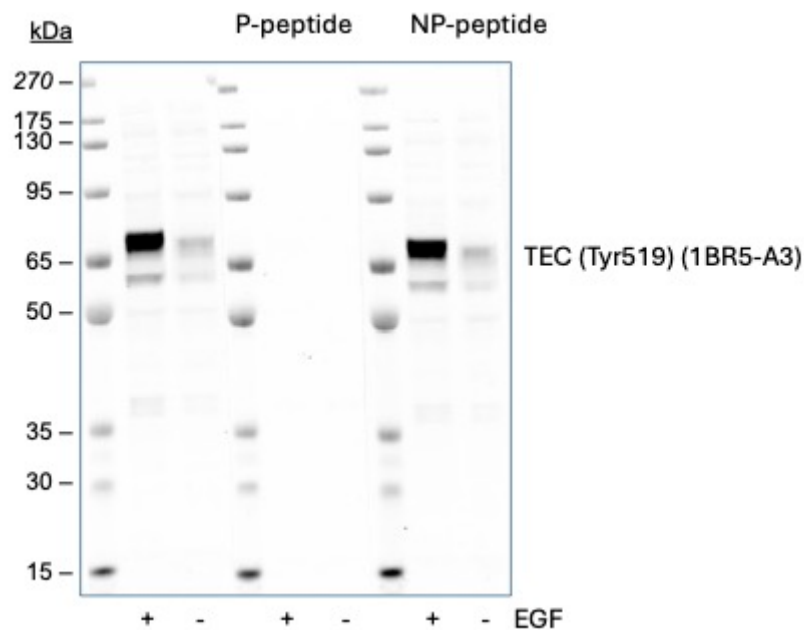


Flow cytometric analysis of Ramos cells untreated (brown) or treated with EGF (green) and stained using Phospho-Tec (Tyr519) antibody TECY519-1BR5-A3. Cat. #2816 or concentration match isotope control Cat#2141 for cells untreated (red) or treated with EGF (blue).



### Phospho-TEC (Tyr519)

Peptide blocking flow cytometric analysis of Ramos cells untreated (light green) or treated with EGF (dark green) or untreated (light violet) or EGF (dark violet) and blocked with phospho-peptide or untreated (light brown) or treated with EGF (dark brown) and blocked with non-phospho peptide using Phospho-Tec (Tyr519) antibody TECY519-1BR5-A3 at 0.1  $\mu\text{g/mL}$ . Cat #2816.



Western blot analysis of Ramos cell extract untreated or treated with EGF using phospho-TEC (Tyr519) antibody, TECY519-1BR5-A3 at 0.1  $\mu\text{g/mL}$ , Cat. #2816. Band corresponding to phospho-Tec(Tyr519) was eliminated with incubation of cell lysate with phospho-peptide whereas incubation with non-phospho-peptide did not have any effect of intensity of the phospho-Tec (Tyr519) band.