

p53-K382 monomethylated (R4BA1) rabbit mAb

www.abwizbio.com

Support: info@abwizbio.com

Order: sales@abwizbio.com

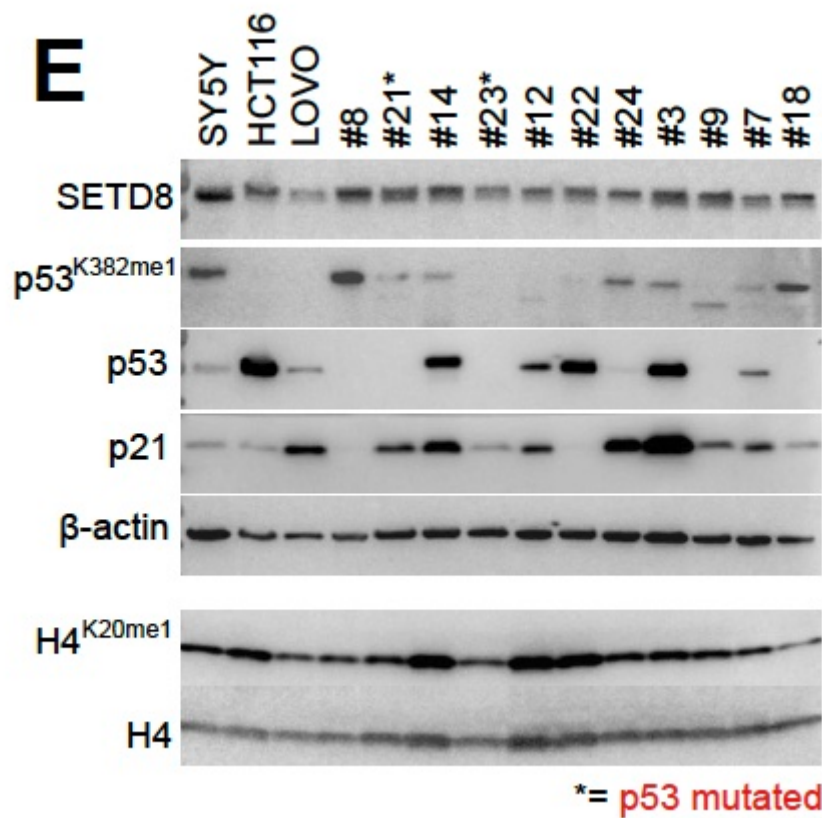
Catalog: #2792

Store at: 2-8°C

For Research Use Only. Not For Use In Diagnostic Procedures.

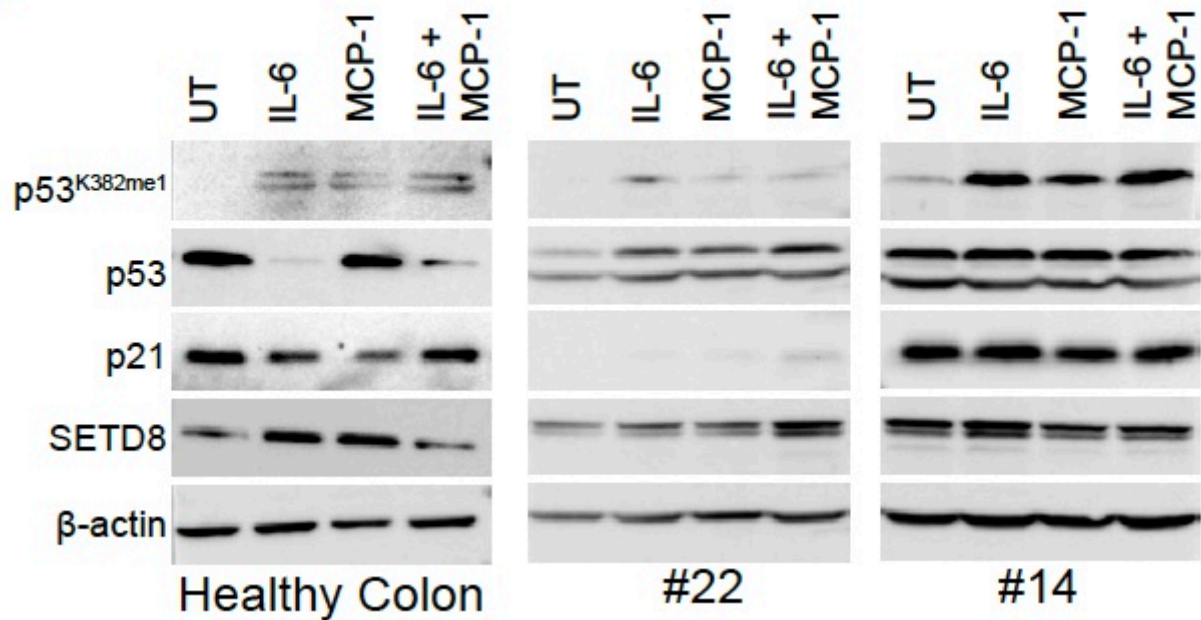
Applications	Detection	Clonality	Isotype
WB	Anti-Rabbit IgG	Monoclonal	Other

Format:	Unconjugated
Cross Reactivity:	Predicted to work with mouse, rat and other homologues.
Formulation:	1X PBS, 0.09% NaN ₃ , 0.2% BSA
Preparation:	Protein A
Reactivity:	Human
Recommended Usage:	For flow cytometric staining, the suggested use of this reagent is 5 µL per million cells or 5 µL per 100 µL of staining volume. It is recommended that the reagent be titrated for optimal performance for each application. See product image legends for additional information.
Immunogen:	peptide region around Lysine 382 in p53 C-terminal.
Description:	
References:	<ol style="list-style-type: none">1. Shi X., et al., Mol Cell 2007, 27:636-646, doi: 10.1016/j.molcel.2007.07.0122. Marouco D., et al., 2013, Oncotarget 4:1556-1571.3. Zhu J., et al., PNAS 2016, 113:9822-9827.



Immunoblot analysis of the indicated total and histone proteins in SY5Y NB cells, HCT116 and LOVO colon cancer cells, and 11 CR-CSphCs (left panel). Densitometry analysis of p53K382me1 protein levels compared with p53 total protein levels measured as relative density units (RDU) (right panel)

A



Immunoblot analysis showing the expression of the indicated proteins in healthy colon cells and CR-CSphCs (#22 and #14) treated with IL-6 and MCP-1 alone and in combination for 72 h.