

# Anti-PLXDC2 (3B8) rabbit mAb Conformation specific

[www.abwizbio.com](http://www.abwizbio.com)

Support: [info@abwizbio.com](mailto:info@abwizbio.com)

Order: [sales@abwizbio.com](mailto:sales@abwizbio.com)

Catalog: #2631

Store at: -20°C

For Research Use Only. Not For Use In Diagnostic Procedures.

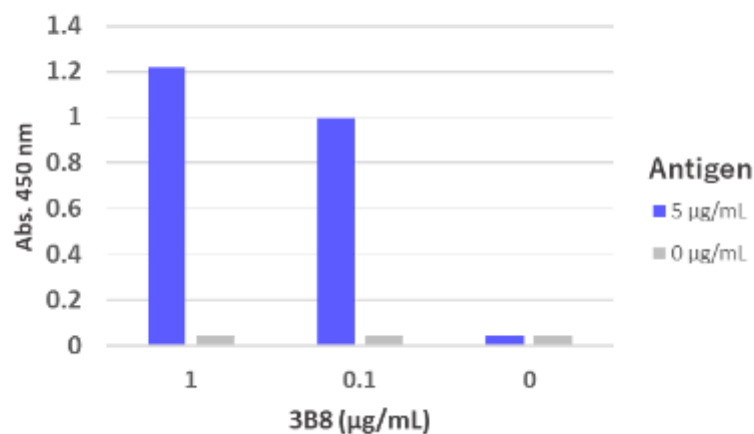
Applications	Detection	Clonality	Isotype
ELISA	Anti-Rabbit IgG	Monoclonal	Rabbit IgGk

Format:	Unconjugated
Cross Reactivity:	Predicted to work with mouse, rat and other homologues.
Formulation:	1×PBS, 0.05% (w/v) Proclin300
Preparation:	Ion Exchange
Reactivity:	Human
Recommended Usage:	ELISA 1:5000~10000 Native-Western blotting, 1:1000-2000
Immunogen:	N/A

## Description:

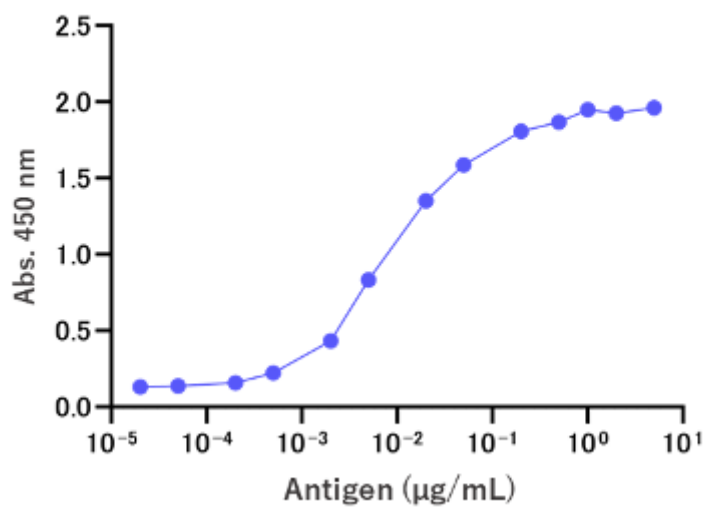
References:	<ol style="list-style-type: none"><li>1. Tanaka Y et al 2021 bioRxiv Sep 27: 2021.09.27.461900v1.doi: 10.1101/2021.09.27.461900.</li><li>2. Cheng G et al. 2014 Elife. 3:e05401</li><li>3. Bianchi E et al 2021 Nat Commun. 2021 12(1):1251.</li><li>4. Großkopf AK et al. 2021 PLoS Pathog. 17(3):e1008979</li><li>5. O'Connell GC et al. 2017 Genom Data. Sep 14:47-52.</li><li>6. Tubau-Juni N, et al 2020 Sci. Rep. 10(1):11506.</li><li>7. Dislich B et al. 2015 Cell Proteomics. 10:2550-63.</li></ol>
-------------	--

## ELISA



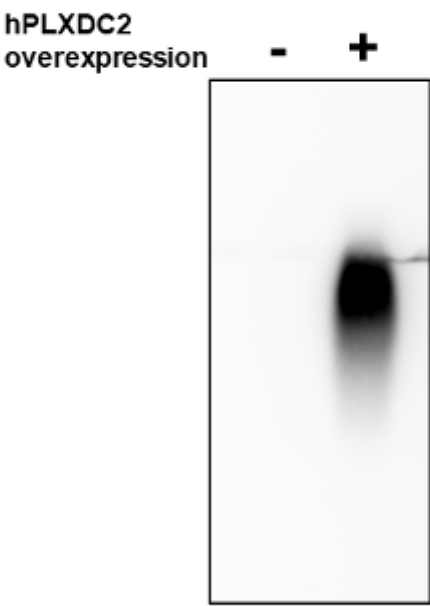
Microtiter wells were coated with human PLXDC2-ECD (extracellular domain, truncated a transmembrane domain from PLXDC2) at 5 ug/mL. Anti-PLXDC2 (3B8) rabbit mAb (Cat#2631) was diluted at 1 ug/mL and 0.1 ug/mL. Anti-PLXDC2 (3B8) rabbit mAb show very specific binding to human PLXDC2-ECD antigen.

### Sandwich ELISA



A sandwich ELISA was performed using anti-PLXDC2 specific rabbit mAb: 3B8 (Cat#2631) as a capture antibody and 4G3-biotin (Cat#2535) as a detection antibody. Human PLXDC2-ECD was serially diluted 1:1 starting at 5 ug/mL. Anti-PLXDC2 rabbit mAb 3B8 and 4G3-biotin detected hPLXDC2-ECD antigen at very high sensitivity as low as 100 pg/mL.

### Native-Western



Native-agarose-Western blot analysis of extracts from HEK293 cells, untransfected or transfected with human PLXDC2 gene, with anti-PLXDC2 (3B8) rabbit mAb at 0.5 µg/mL Cat. #2631