

# Cannabinoid receptor type 2 (CB2) (R4F4) rabbit mAb

[www.abwizbio.com](http://www.abwizbio.com)

Support: [info@abwizbio.com](mailto:info@abwizbio.com)

Order: [sales@abwizbio.com](mailto:sales@abwizbio.com)

**Catalog:** #2561

**Store at:** -20°C

*For Research Use Only. Not For Use In Diagnostic Procedures.*

**Applications**  
Flow Cytometry

**Detection**  
Anti-Rabbit IgG

**Clonality**  
Monoclonal

**Isotype**  
Rabbit IgGk

**Format:** Unconjugated

**Cross Reactivity:** Predicted to work with mouse, rat and other homologues.

**Formulation:** 1X PBS, 0.02% NaN<sub>3</sub>, 50% Glycerol, 0.1% BSA

**Preparation:** Protein A+G

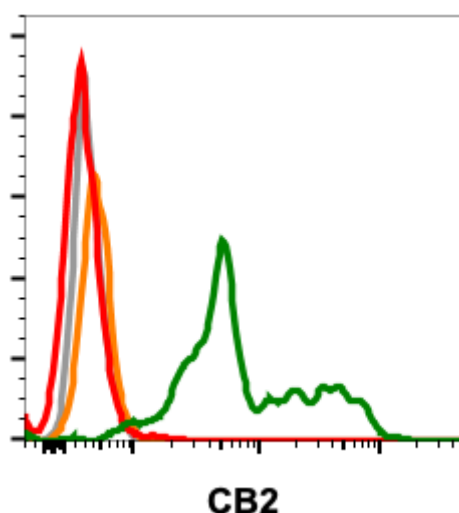
**Reactivity:** Human

**Recommended Usage:** For flow cytometric staining, the suggested use of this reagent is 5 µL per million cells or 5 µL per 100 µL of staining volume. It is recommended that the reagent be titrated for optimal performance for each application. See product image legends for additional information.

**Immunogen:** Synthetic peptide

**Description:**

**References:**



Flow cytometric analysis of HEK293 cells transfected with CB2 (green) or untransfected (red) using CB2-R4F4 antibody at 0.1 µg/mL (Cat. #2561). Isotype control antibody tested under identical conditions does not show staining to transfected (orange) or untransfected (gray) cells.