

# SARS-CoV2 LxC1-E7 human neutralizing mAb

[www.abwizbio.com](http://www.abwizbio.com)

Support: [info@abwizbio.com](mailto:info@abwizbio.com)

Order: [sales@abwizbio.com](mailto:sales@abwizbio.com)

**Catalog:** #2541

**Store at:** -20°C

*For Research Use Only. Not For Use In Diagnostic Procedures.*

Applications	Detection	Clonality	Isotype
Functional Assay, ELISA	Anti-SARS-CoV-2 NP mAb	Monoclonal	Rabbit IgGk

**Format:** Unconjugated

**Cross Reactivity:** No

**Formulation:** 1X PBS

**Preparation:** Protein A

**Reactivity:** Other

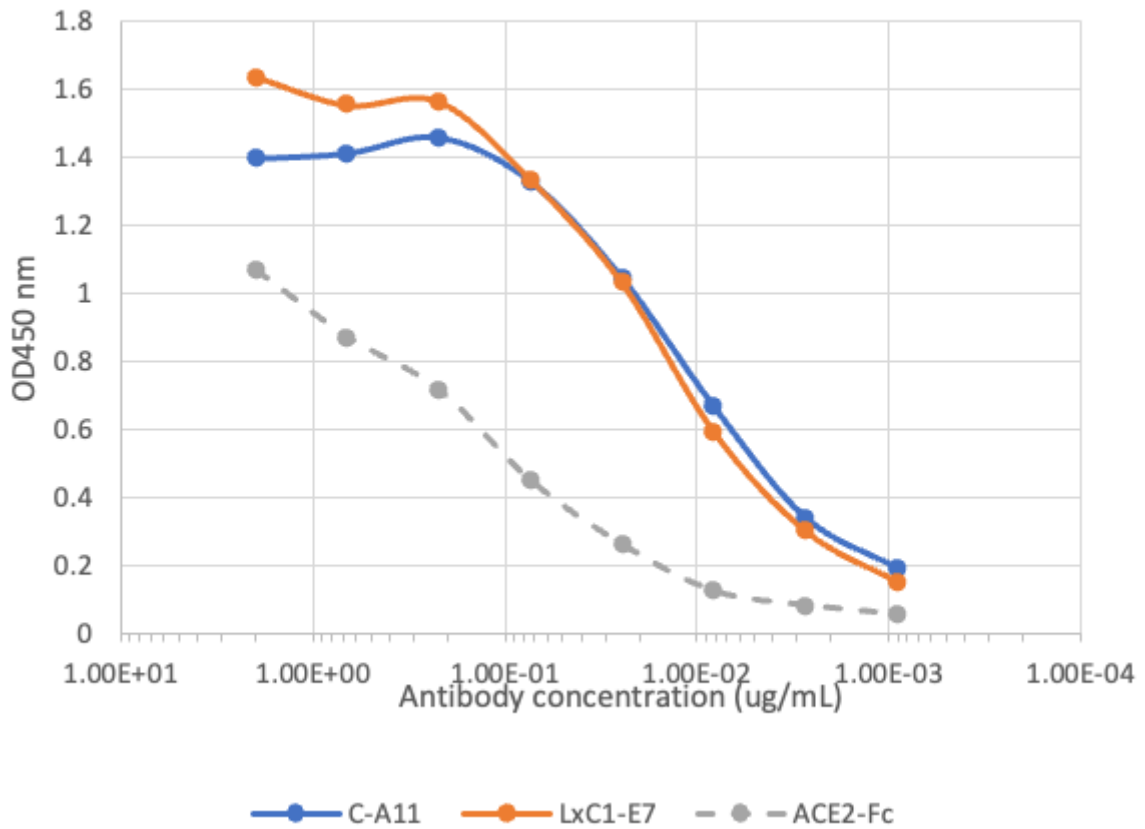
**Recommended Usage:** Experimental conditions may be optimized.

**Immunogen:** A recombinant SARS-CoV-2 spike protein containing RBD.

**Description:**

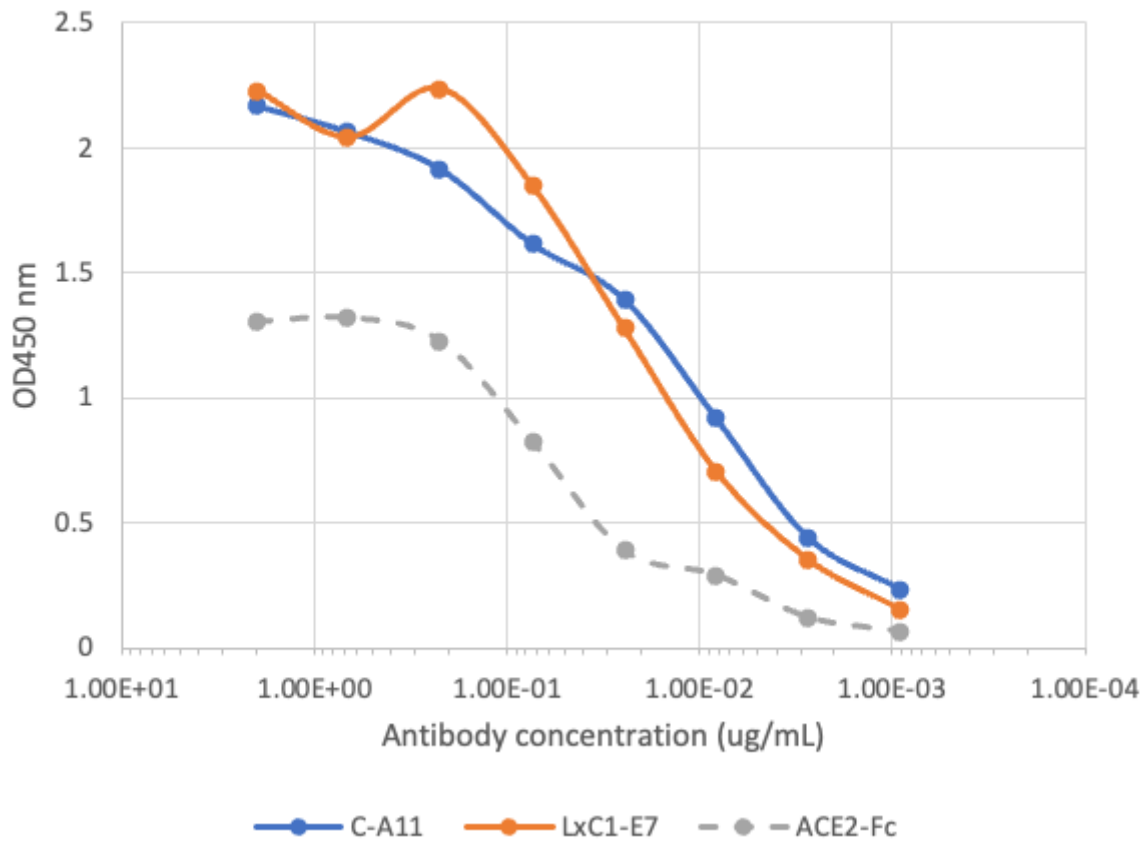
**References:**

WT



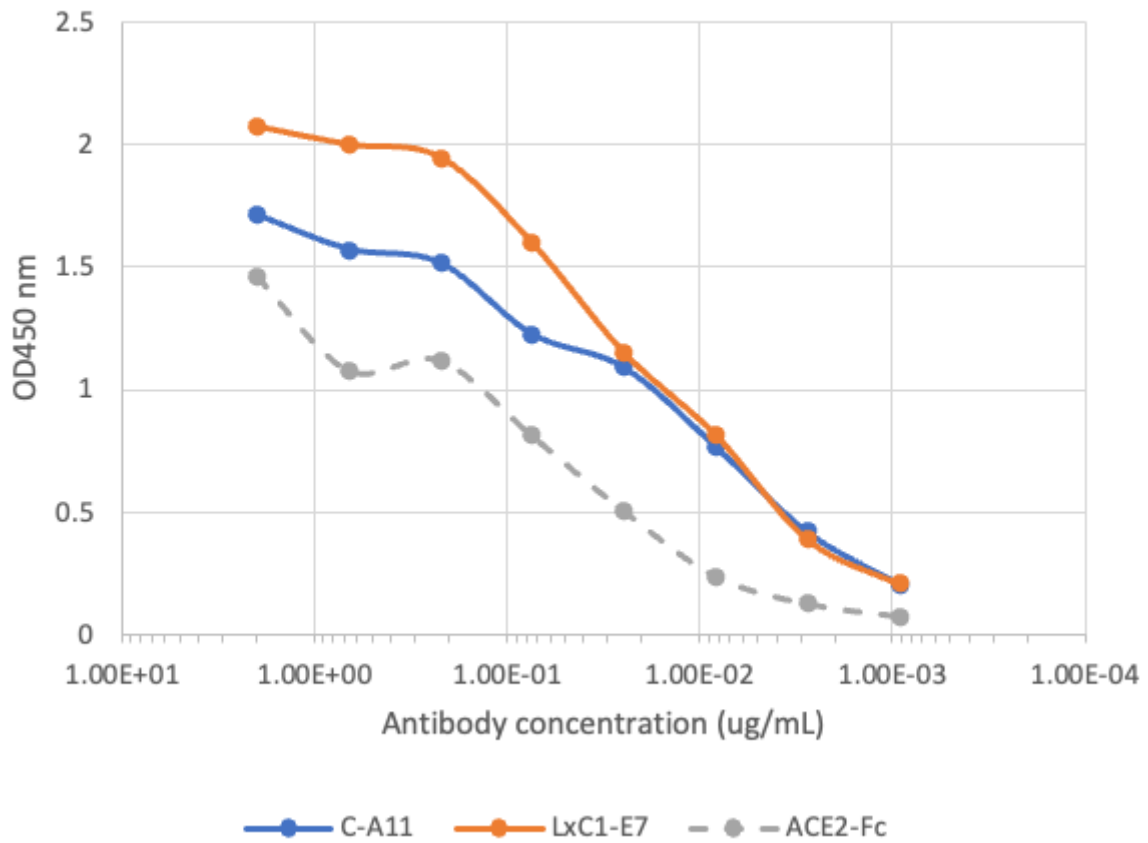
Spike protein trimers were coated at 2  $\mu$ g/mL and incubated with serially diluted antibodies. The bound antibodies were detected with Peroxidase AffiniPure Goat Anti-Human IgG, Fc $\gamma$  fragment specific (Jackson Immuno Research Catalog #109-035-098) or Peroxidase AffiniPure Goat Anti-Human IgG, Fc $\gamma$  fragment specific (Jackson Immuno Research Catalog #109-035-098) or Peroxidase AffiniPure Goat Anti-Human IgG, Fc $\gamma$  fragment specific (Jackson Immuno Research Catalog #109-035-098).

## Alpha (B1.1.7)



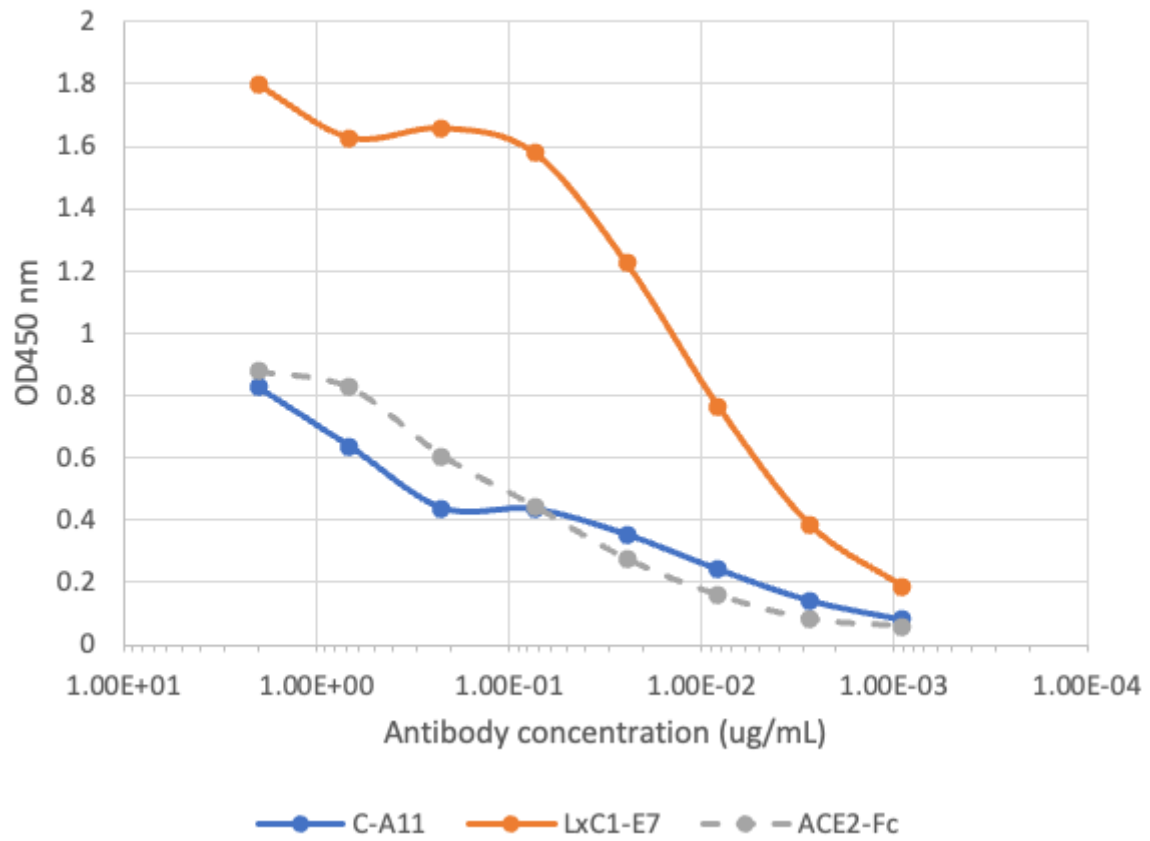
Spike protein trimers were coated at 2 µg/mL and incubated with serially diluted antibodies. The bound antibodies were detected with Peroxidase AffiniPure Goat Anti-Human IgG, Fcγ fragment specific (Jackson Immuno Research Catalog #109-035-098) or Peroxidase AffiniPure Goat Anti-Human IgG, Fcγ fragment specific (Jackson Immuno Research Catalog #109-035-098) or Peroxidase AffiniPure Goat Anti-Human IgG, Fcγ fragment specific (Jackson Immuno Research Catalog #109-035-098).

## Beta (B.1.351)



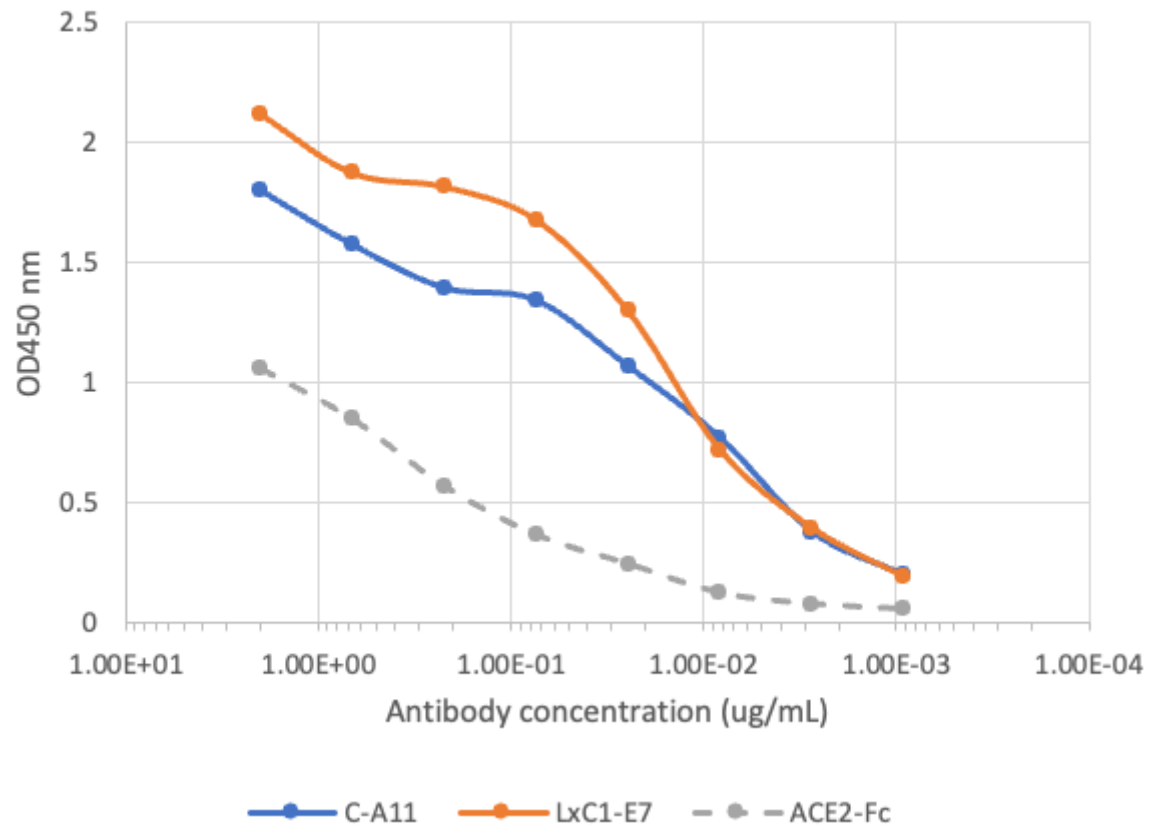
Spike protein trimers were coated at 2 µg/mL and incubated with serially diluted antibodies. The bound antibodies were detected with Peroxidase AffiniPure Goat Anti-Human IgG, Fcγ fragment specific (Jackson Immuno Research Catalog #109-035-098) or Peroxidase

## Gamma (P.1)



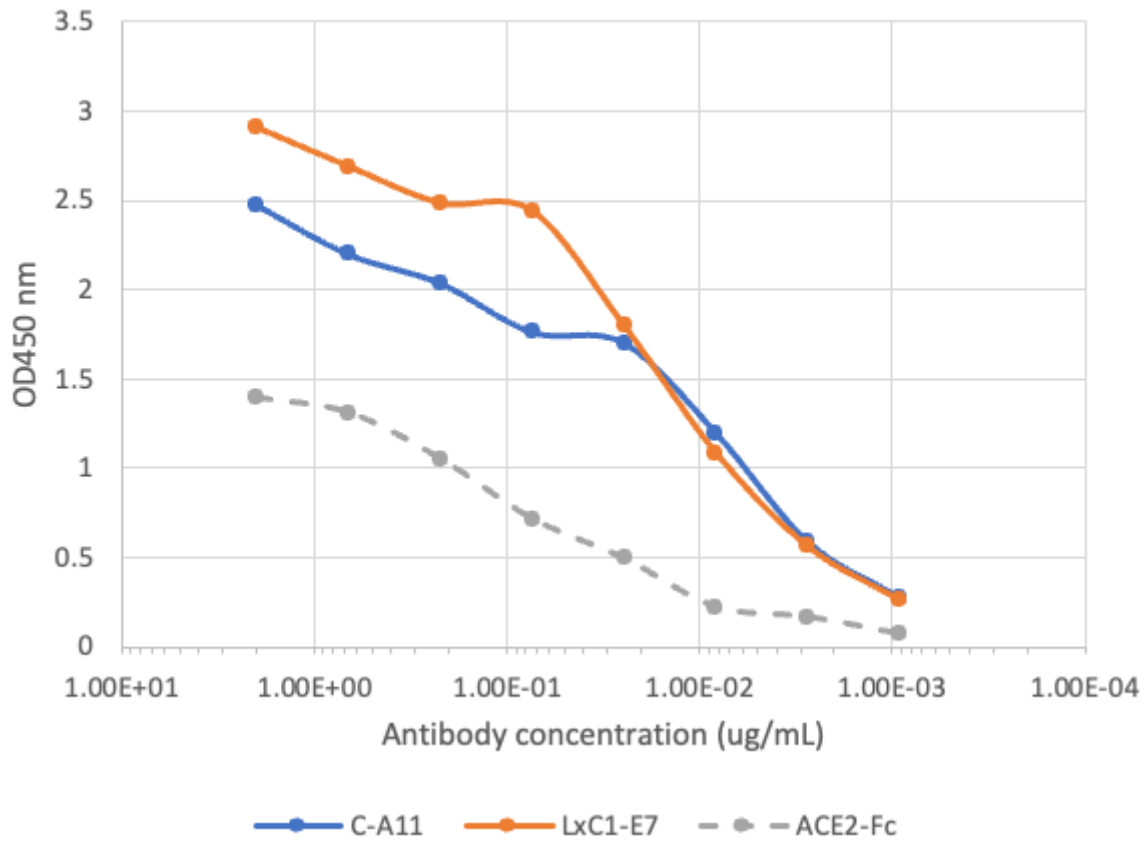
Spike protein trimers were coated at 2 µg/mL and incubated with serially diluted antibodies. The bound antibodies were detected with Peroxidase AffiniPure Goat Anti-Human IgG, Fcγ fragment specific (Jackson Immuno Research Catalog #109-035-098) or Peroxidase AffiniPure Goat Anti-Human IgG, Fcγ fragment specific (Jackson Immuno Research Catalog #109-035-098) or Peroxidase AffiniPure Goat Anti-Human IgG, Fcγ fragment specific (Jackson Immuno Research Catalog #109-035-098).

## Kappa (B.1.617.1)



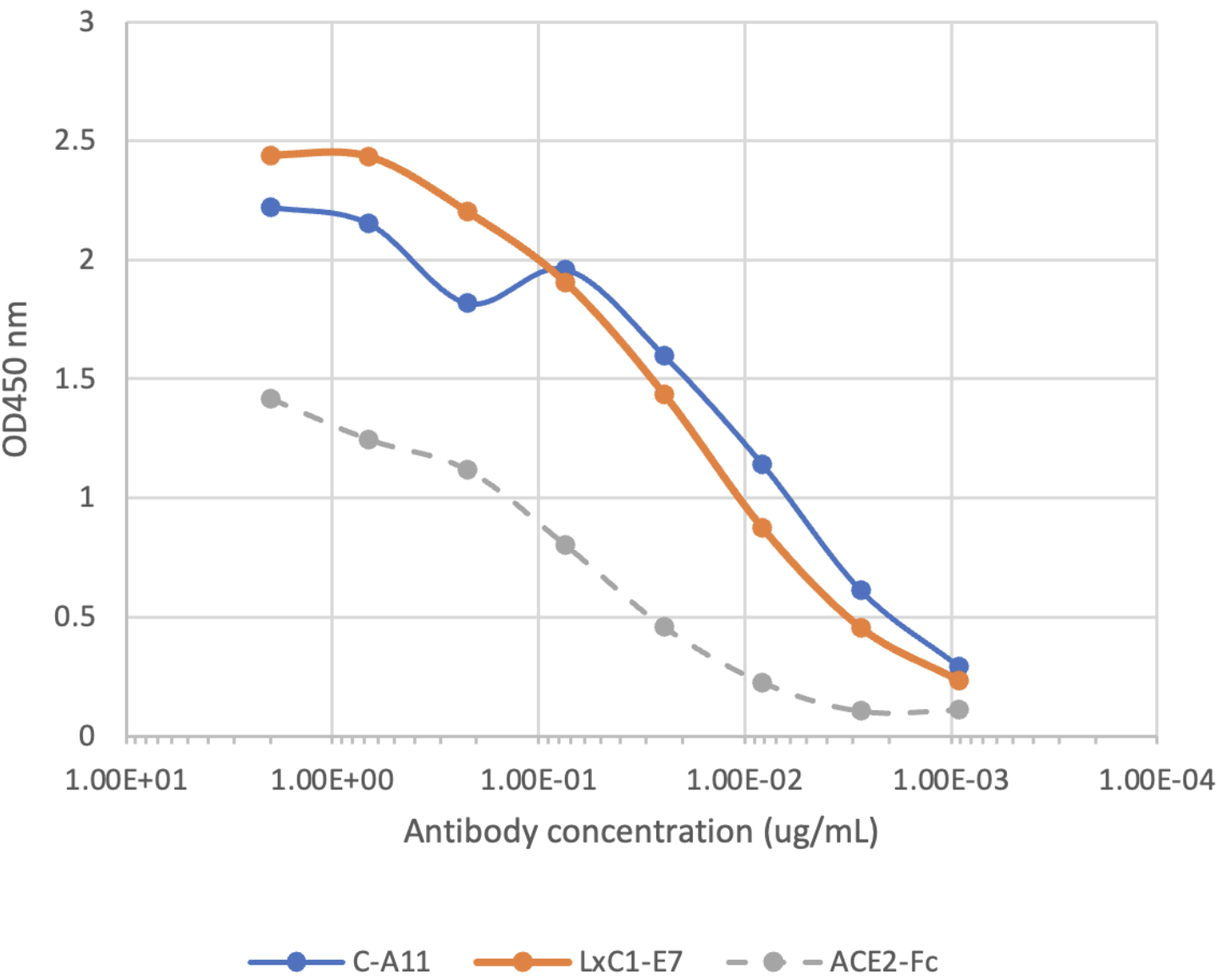
Spike protein trimers were coated at 2 µg/mL and incubated with serially diluted antibodies. The bound antibodies were detected with Peroxidase AffiniPure Goat Anti-Human IgG, Fcγ fragment specific (Jackson Immuno Research Catalog #109-035-098) or Peroxidase

## Epsilon (B1.429)



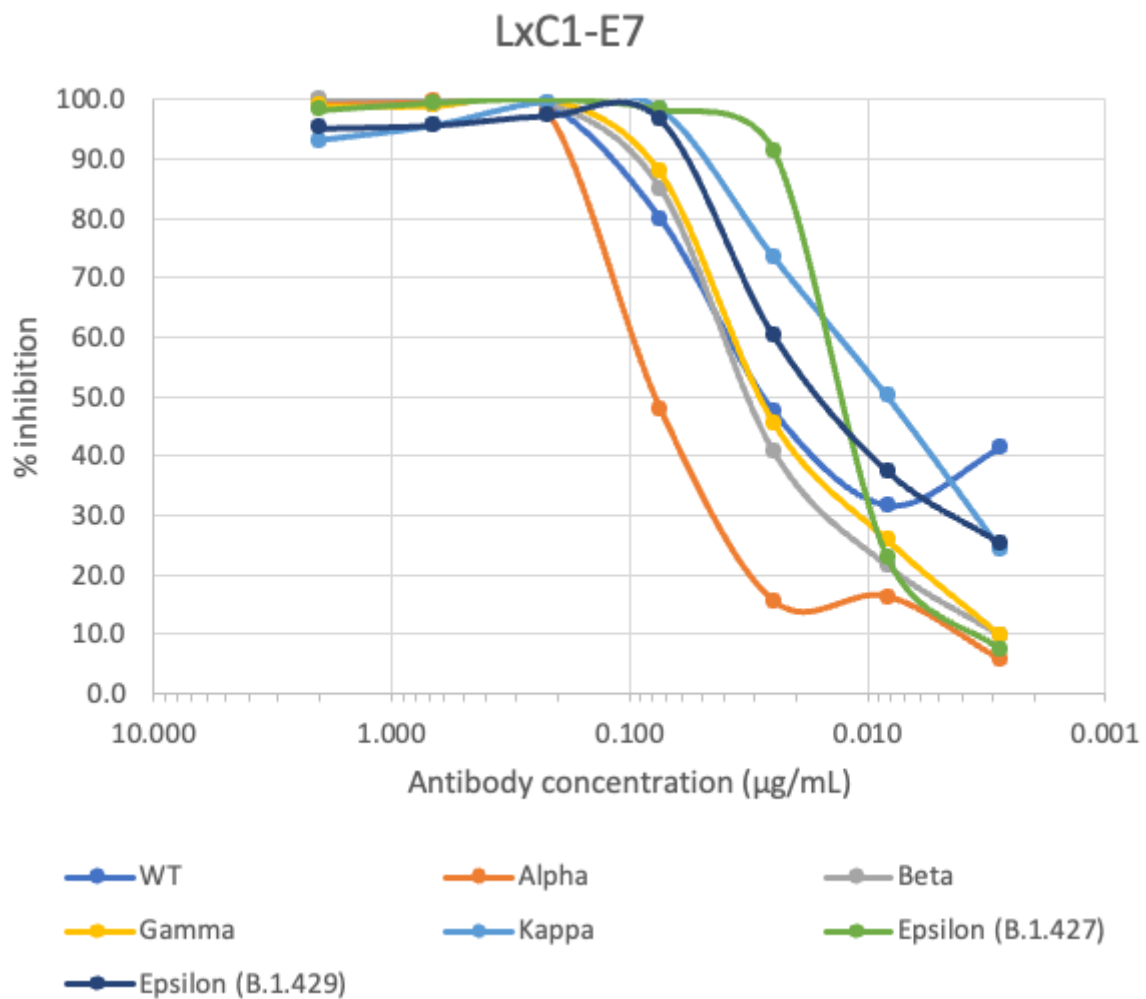
Spike protein trimers were coated at 2 µg/mL and incubated with serially diluted antibodies. The bound antibodies were detected with Peroxidase AffiniPure Goat Anti-Human IgG, Fcγ fragment specific (Jackson Immuno Research Catalog #109-035-098) or Peroxidase AffiniPure Goat Anti-Human IgG, Fcγ fragment specific (Jackson Immuno Research Catalog #109-035-098) or Peroxidase AffiniPure Goat Anti-Human IgG, Fcγ fragment specific (Jackson Immuno Research Catalog #109-035-098).

# Epsilon (B.1.427)



Spike protein trimers were coated at 2  $\mu\text{g/mL}$  and incubated with serially diluted antibodies. The bound antibodies were detected with Peroxidase AffiniPure Goat Anti-Human IgG, Fcy fragment specific (Jackson Immuno Research Catalog #109-035-098) or Peroxid





Spike protein trimers were coated at 2 µg/mL and incubated with serially diluted antibodies. ACE2-Avitag protein (Acro Biosystems Catalog#AC2-H82E6) was added to 0.037 µg/mL and the bound ACE2 was detected with High Sensitivity StreptAvidin-HRP (Thermo Fi

#### IC50

	Wild type (WT)	Alpha (B.1.1.7)	Beta (B.1.351)	Gamma (P.1)	Kappa (B.1.617.1)	Epsilon (B.1.427)	Epsilon (B.1.429)
LxC1-E7	28.29484	79.91190	35.01264	29.84000	8.12425	14.73980	17.26670

N/A