

Anti-PLXDC2 (4G3) rabbit mAb Biotin Conjugate

www.abwizbio.com

Support: info@abwizbio.com

Order: sales@abwizbio.com

Catalog: #2535

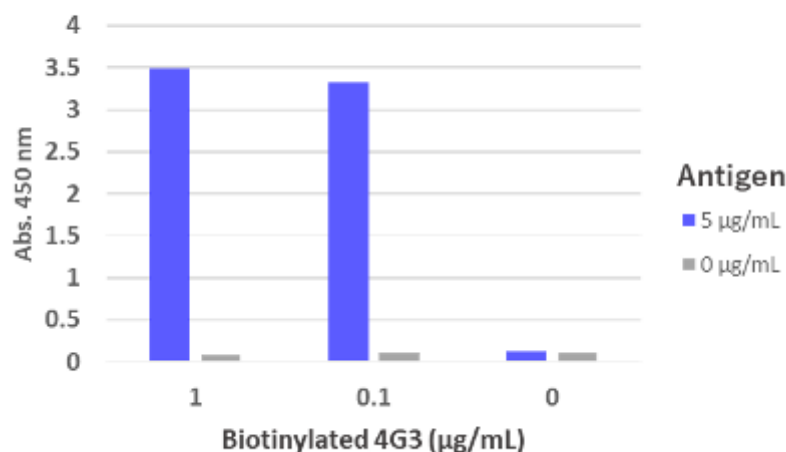
Store at: 2-8°C

For Research Use Only. Not For Use In Diagnostic Procedures.

Applications	Detection	Clonality	Isotype
WB	Streptavidin	Monoclonal	Rabbit IgGκ

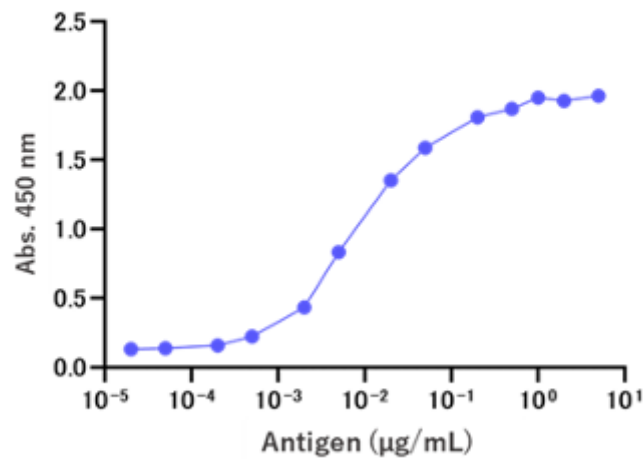
Format:	Biotin
Cross Reactivity:	Predicted to work with mouse
Formulation:	1X PBS, 0.05% (w/v) Proclin300
Preparation:	Ion Exchange
Reactivity:	Human
Recommended Usage:	ELISA 1:5000-10000 Western blotting 1:1000-2000 ICH 1:1000-2000
Immunogen:	HEK293 cells expressing human PLXDC2
Description:	
References:	<ol style="list-style-type: none">1. Tanaka Y et al 2021 bioRxiv Sep 27: 2021.09.27.461900v1.doi: 10.1101/2021.09.27.461900.2. Cheng G et al. 2014 Elife. 3:e054013. Bianchi E et al 2021 Nat Commun. 2021 12:1251.4. Großkopf AK et al. 2021 PLoS Pathog. 17:e10089795. O'Connell GC et al. 2017 Genom Data. 14:47-52.6. Tubau-Juni N, et al 2020 Sci. Rep. 10:11506.7. Dislich B et al. 2015 Cell Proteomics. 10:2550-63.

ELISA



Microtiter wells were coated with human PLXDC2-ECD (extracellular domain, truncated a transmembrane domain from PLXDC2) at 5 ug/mL. Anti-PLXDC2 (4G3) rabbit mAb Biotin Conjugate (Cat#2535) was diluted at 1 ug/mL and 0.1 ug/mL. Anti-PLXDC2 (4G3) rabbit mAb Biotin Conjugate show very specific binding to human PLXDC2-ECD antigen.

Sandwich ELISA



A sandwich ELISA was performed using anti-PLXDC2 specific rabbit mAb: 3B8 (Cat#XXXX) as a capture antibody and 4G3-biotin (Cat#2535) as a detection antibody. Human PLXDC2-ECD#2631 was serially diluted 1:1 starting at 5 ug/mL. Anti-PLXDC2 rabbit mAb 3B8 and 4G3-biotin detected hPLXDC2-ECD antigen at very high sensitivity as low as 100 pg/mL.

