

For Research Use Only. Not For Use In Diagnostic Procedures.

| Applications | Detection | Clonality | Isotype |
|--------------|-----------------|------------|-------------|
| WB,IHC | Anti-Rabbit IgG | Monoclonal | Rabbit IgGk |

Format: Unconjugated

Cross Reactivity: Cross react with mouse.

Formulation: 10 mM HEPES (pH 7.5), 150 mM NaCl, 50% Glycerol, 0.1% BSA, 0.02% NaN₃

Preparation: Ion Exchange

Reactivity: Human

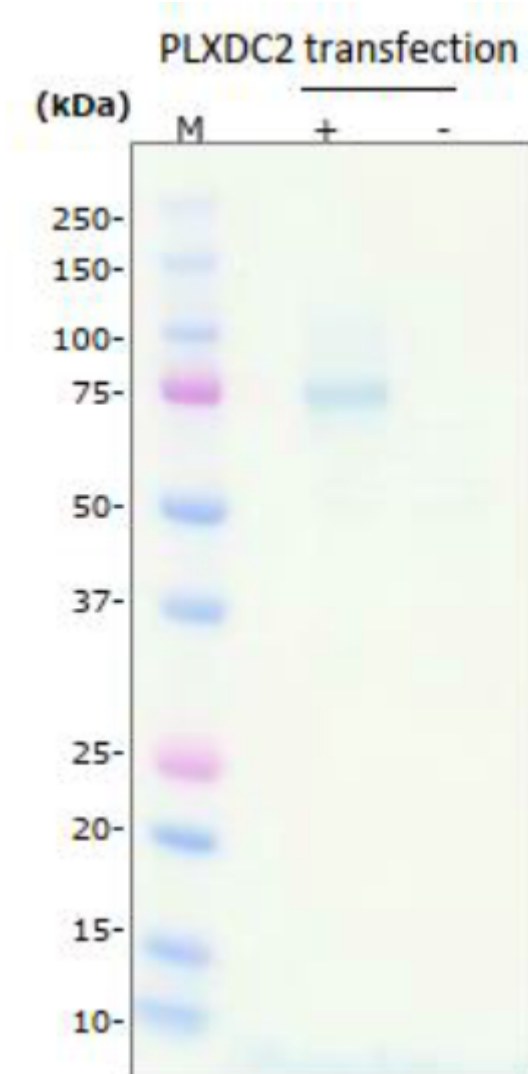
Recommended Usage: WB: 1:1000 - 2000 IHC: 1: 100 4 oC overnight

Immunogen: HEK293 cells expression human PLXDC2

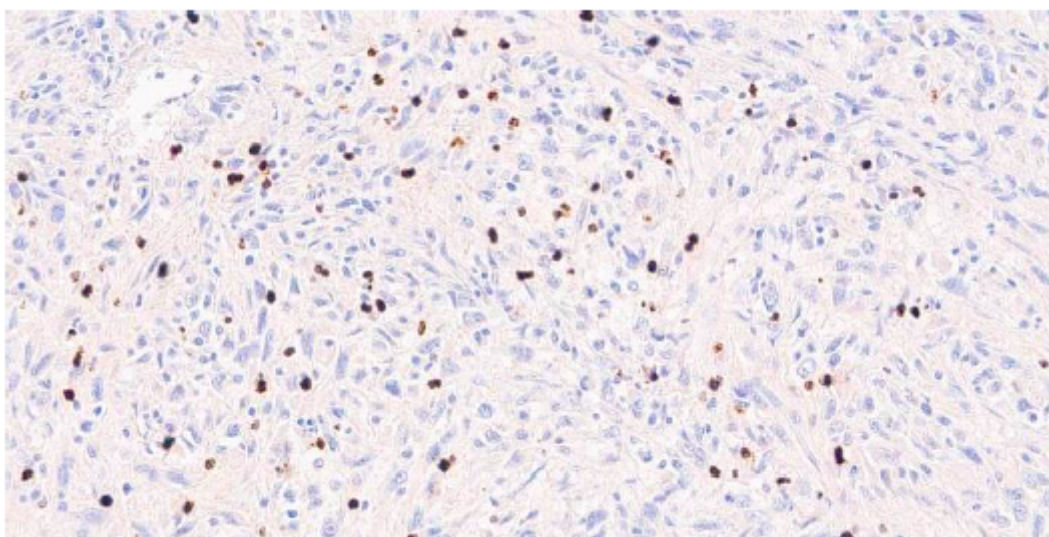
Description: Plexin domain containing protein 2 (PLXDC2), a cell surface transmembrane protein, is expressed in many tissues including haematopoietic stem cells, neural stem cells, pluripotent stem cells, and tumor cells. PLXDC2 may play an important role in neuronal growth, stem cell development, angiogenesis, and cancer cell growth. PLXDC2 has been reported as a receptor for pigment epithelium derived factor (PEDF) or as an activating ligand for adhesion G-protein coupled receptor D1 (Adgrd1). Also PLXDC2 was thought as a novel interaction partner and an entry receptor for rhesus monkey rhadinovirus (RRV). The gene expression level of PLXDC2 was elevated in the peripheral blood of stroke patients or in mouse bone marrow-derived macrophages in response to *Helicobacter pylori*. The protease BACE1 (β -Site APP Cleaving Enzyme), a major drug target in Alzheimer's disease, cleaves the amyloid precursor protein (APP) as well as PLXDC2 as one of several other substrates.

References:

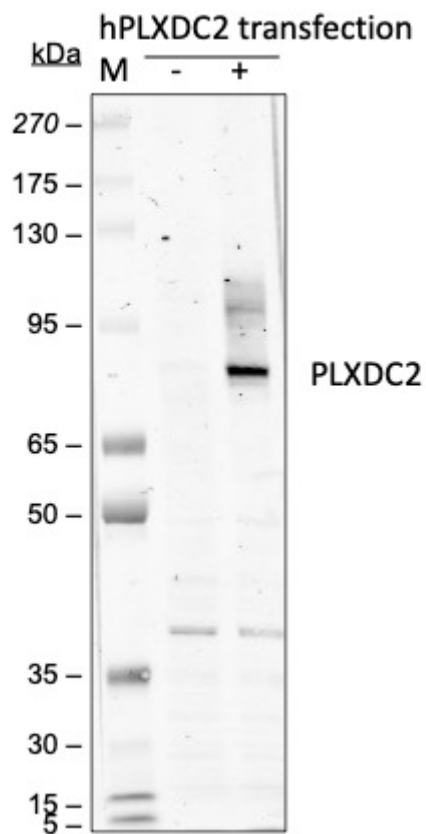
1. Shimizu H, et al., 2018, Protein Expr Purif, 27-33.
2. Yamamoto N, et al., 2020, Monoclonal Antibody Immunodiagn Immunother, 39: 57-60.



Western blot analysis of extracts from HEK293 cells, untransfected or transfected with human PLXDC2 gene using anti-PLXDC2 (4G3) rabbit mAb at 1.0 ug/mL. Cat# 2531



Immunohistochemistry analysis of PLXDC2 using anti-PLXDC2 (4G3) (Cat# 2531) at 8.0 ug/mL staining PLXDC2 in human liver cancer tissue (Human Multi-tissue MicroArray (Cancer), NBP2-30263, Novus Biological).



Western blot analysis of HEK293EBNA cells non-transfect (-) or transfected with hPLXDC2 (+) using anti-PLXDC2 antibody 4G3 at 0.1 ug/mL. Cat. #2531.