

SARS-CoV-2 Nucleoprotein (NP) (85C1) rabbit mAb

www.abwizbio.com

Support: info@abwizbio.com

Order: sales@abwizbio.com

Catalog: #2496

Store at: 2-8°C

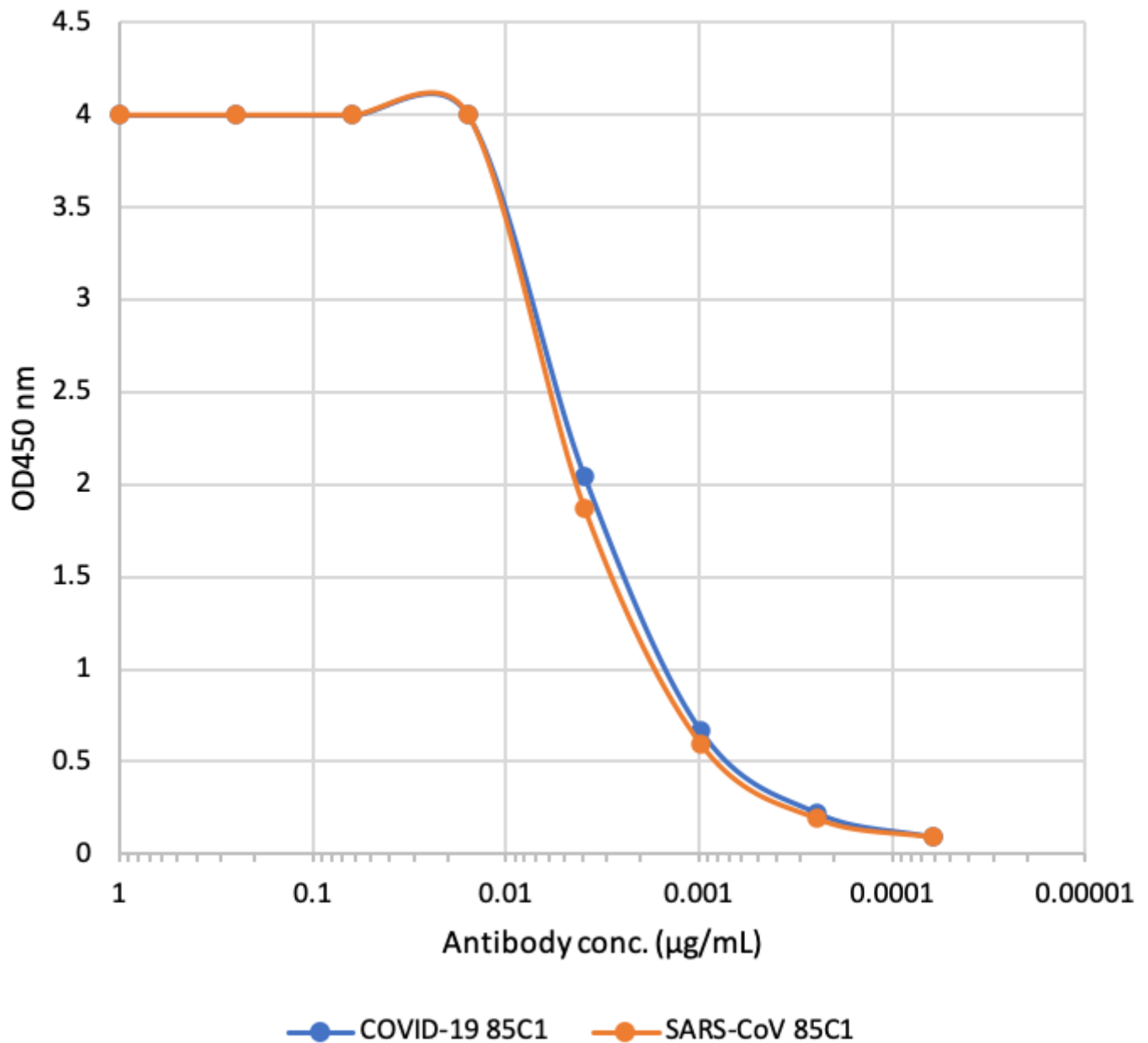
For Research Use Only. Not For Use In Diagnostic Procedures.

Applications	Detection	Clonality	Isotype
ELISA	Anti-Rabbit IgG	Monoclonal	Rabbit IgGk

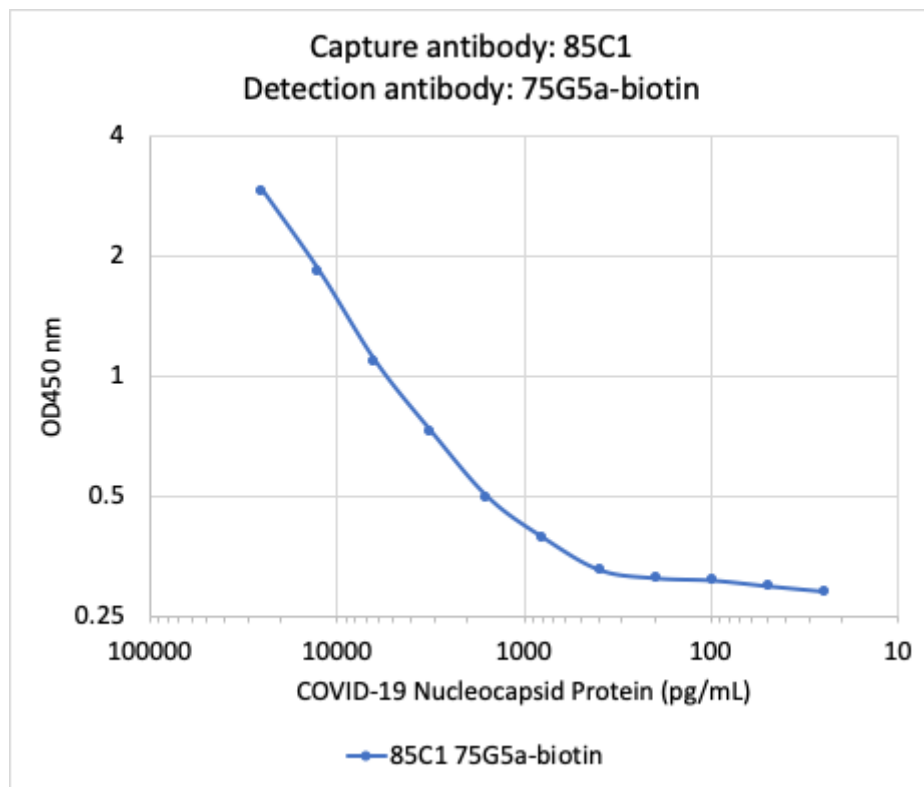
Format:	Unconjugated
Cross Reactivity:	Highly-sensitive to both SARS-CoV-2 and SARS-CoV nucleoprotein.
Formulation:	1X PBS, 0.02% NaN ₃
Preparation:	Protein A
Reactivity:	Other
Recommended Usage:	Used for specific, high-sensitivity detection of SARS-CoV-2 nucleocapsid protein (NP) in immunoassay. Can be paired with other NP-specific clones for detection in sandwich ELISA format.
Immunogen:	SARS-CoV-2 nucleoprotein (NP) specific peptide
Description:	<p>We have leveraged our next-generation rabbit mAb discovery platform to develop recombinant rabbit monoclonal antibodies with extremely high sensitivity and specificity to SARS-CoV-2. These antibodies, which include clones 75G5a (Abwiz Cat. #2481), 84C4a (Abwiz Cat. #2486), 84D7 (Abwiz Cat. #2491), and 85C1 (Abwiz Cat. #2496) can be paired in sandwich detection assay and used to detect nucleoprotein (NP) antigen from SARS-CoV-2. Antibodies 75G5a, 84C4a, and 84D7 do not cross-react to the highly related SARS-CoV virus or to any other coronaviruses tested. Sandwich ELISA detection using TMB/acid developer reliably detects NP antigen in the pg/mL range, and sensitivity is expected to be even higher when using more sensitive developer strategies. This panel of antibodies can be used as raw materials for diagnostic kits and can be applied to lateral flow systems for diagnostic detection of COVID-19.</p>

References:

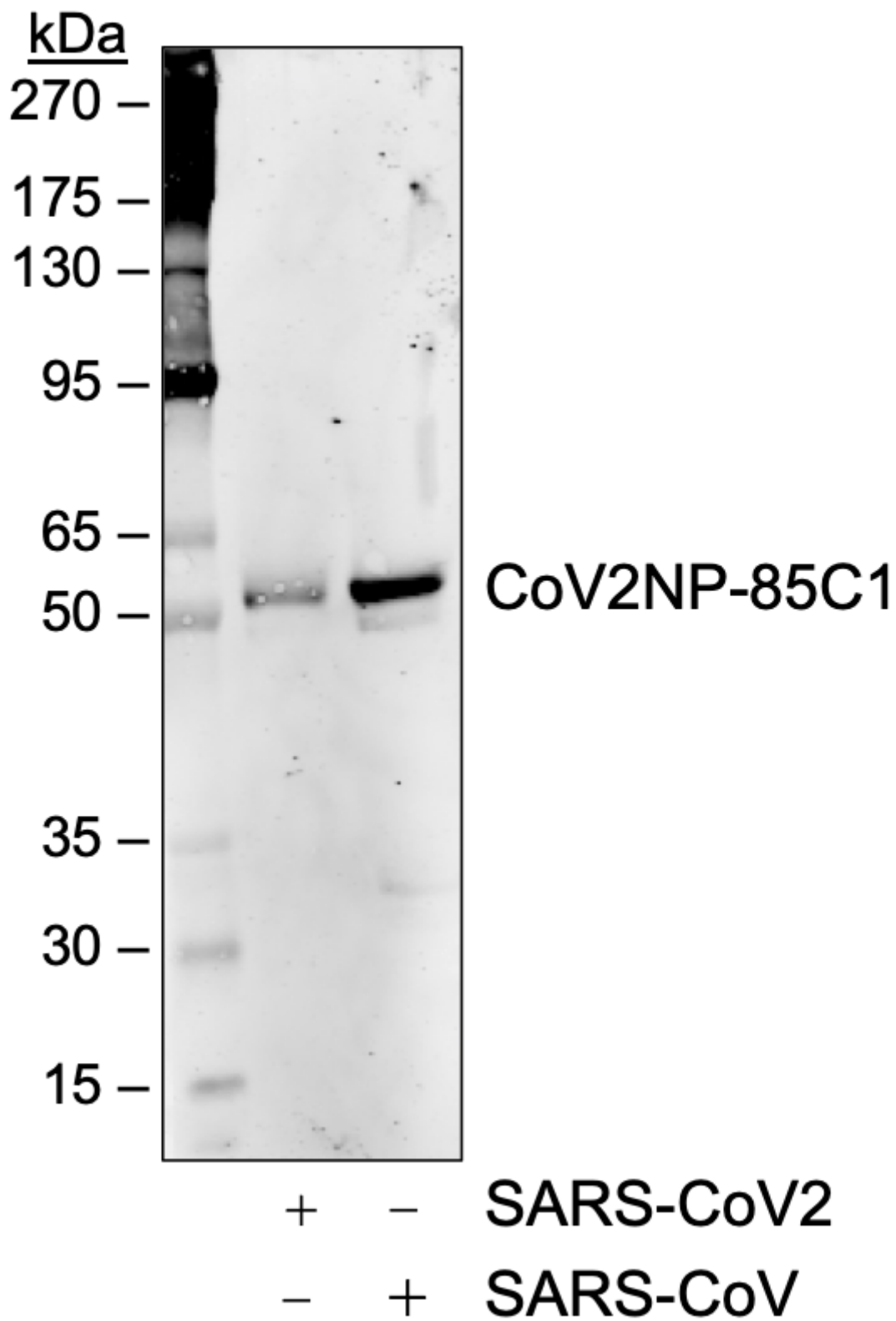
Binding of 85C1



Microtiter wells were coated with SARS-CoV-2 (COVID-19) Nucleocapsid Protein (NP) and SARS-CoV NP at 1 ug/mL. Purified rabbit monoclonal antibody 85C1 (Cat# 2496) was serially diluted 1:2 starting at 1 ug/mL. Rabbit monoclonal antibody 85C1 show very strong and specific binding to both COVID-19 NP antigen and to SARS-CoV NP antigen.



A sandwich ELISA was performed using SARS-CoV-2 (COVID-19) Nucleocapsid Protein (NP) specific rabbit monoclonal antibodies: 85C1 (Cat# 2496) as a capture antibody and 75G5a-biotin (Cat# 2482) as a detection antibody. COVID-19 NP was serially diluted 1:2 starting at 25 ng/mL. Rabbit monoclonal antibodies 85C1 and 75G5a-biotin detected COVID-19 NP antigen at very high sensitivity as low as 25 pg/mL (2.5 pg).



Western blot analysis of 50 ng of SARS-CoV2 and SARS-CoV nucleocapsid protein probed with 1 ug/mL CoV2NP rabbit monoclonal antibody (85C1), CoV2NP-84C1. Cat. #2496.