

Phospho-MCM2 (Ser139) (B12) rabbit mAb APC conjugate

www.abwizbio.com

Support: info@abwizbio.com

Order: sales@abwizbio.com

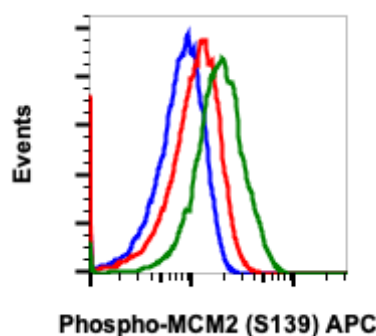
Catalog: #2434

Store at: 2-8°C

For Research Use Only. Not For Use In Diagnostic Procedures.

Applications	Detection	Clonality	Isotype
Flow Cytometry	N/A	Monoclonal	Rabbit IgGκ

Format:	APC
Cross Reactivity:	Predicted to work with mouse, rat and other homologues.
Formulation:	1X PBS, 0.09% NaN ₃ , 0.2% BSA
Preparation:	Protein A+G
Reactivity:	Human,Mouse,Rat
Recommended Usage:	For flow cytometric staining, the suggested use of this reagent is 5 µL per million cells or 5 µL per 100 µL of staining volume. It is recommended that the reagent be titrated for optimal performance for each application. See product image legends for additional information.
Immunogen:	A synthetic phospho-peptide corresponding to residues surrounding Ser139 of human phospho MCM2
Description:	The members of minichromosome maintenance (Mcm) protein family 2-7 were originally identified as a group of proteins essential for DNA replication (chromosomal maintenance (1,2). They share common sequence homology to each other in their nucleotide-binding domains and are distinct subgroup of the large AAA ATPase family, which are required for the initiation and elongation of DNA replication. It has been reported that Cdc7/Dbf4 phosphorylates MCM2 during G1/S cell cycle which coincides with the initiation of DNA replication (3,4)
References:	<ol style="list-style-type: none">1. Bell S.P. and Dutta A. (2002) Annu Rev Biochem 71:333-74.2. Chong J.P. et al., (1995) Nature 375: 418-21.3. Donovan S. et al., (1997) Proc Natl Acad Sci USA, 94:5611-6.4. Tsuji T et al., (2006) Mol Biol Cell 17:4459-72.



Flow cytometric analysis of C6 cells, untreated and unstained as negative control (blue) or untreated (red) or treated with staurosporine (green) and stained using Phospho-MCM2 (Ser139) antibody MCM2S139-B12 APC conjugate. Cat. #2434.