

# Phospho-MCM2 (Ser139) (B12) rabbit mAb PE conjugate

[www.abwizbio.com](http://www.abwizbio.com)

Support: [info@abwizbio.com](mailto:info@abwizbio.com)

Order: [sales@abwizbio.com](mailto:sales@abwizbio.com)

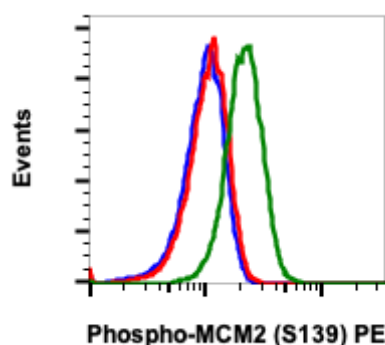
**Catalog:** #2432

**Store at:** 2-8°C

*For Research Use Only. Not For Use In Diagnostic Procedures.*

Applications	Detection	Clonality	Isotype
Flow Cytometry	N/A	Monoclonal	Rabbit IgGκ

<b>Format:</b>	PE
<b>Cross Reactivity:</b>	Predicted to work with mouse, rat and other homologues.
<b>Formulation:</b>	1X PBS, 0.09% NaN <sub>3</sub> , 0.2% BSA
<b>Preparation:</b>	Protein A+G
<b>Reactivity:</b>	Human,Mouse,Rat
<b>Recommended Usage:</b>	For flow cytometric staining, the suggested use of this reagent is 5 µL per million cells or 5 µL per 100 µL of staining volume. It is recommended that the reagent be titrated for optimal performance for each application. See product image legends for additional information.
<b>Immunogen:</b>	A synthetic phospho-peptide corresponding to residues surrounding Ser139 of human phospho MCM2
<b>Description:</b>	The members of minichromosome maintenance (Mcm) protein family 2-7 were originally identified as a group of proteins essential for DNA replication (chromosomal maintenance (1,2). They share common sequence homology to each other in their nucleotide-binding domains and are distinct subgroup of the large AAA ATPase family, which are required for the initiation and elongation of DNA replication. It has been reported that Cdc7/Dbf4 phosphorylates MCM2 during G1/S cell cycle which coincides with the initiation of DNA replication (3,4)
<b>References:</b>	<ol style="list-style-type: none"><li>1. Bell S.P. and Dutta A. (2002) Annu Rev Biochem 71:333-74.</li><li>2. Chong J.P. et al., (1995) Nature 375: 418-21.</li><li>3. Donovan S. et al., (1997) Proc Natl Acad Sci USA, 94:5611-6.</li><li>4. Tsuji T et al., (2006) Mol Biol Cell 17:4459-72.</li></ol>



Flow cytometric analysis of C6 cells, untreated and unstained as negative control (blue) or untreated (red) or treated with staurosporine (green) and stained using Phospho-MCM2 (Ser139) antibody MCM2S139-B12 PE conjugate. Cat. #2432.