

Phospho-Lyn (Tyr507) (5B6) rabbit mAb PE conjugate

www.abwizbio.com

Support: info@abwizbio.com

Order: sales@abwizbio.com

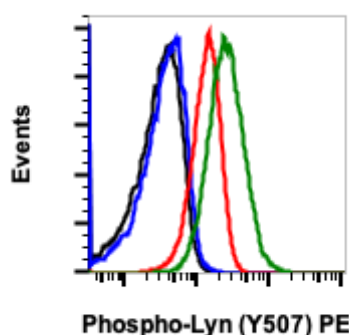
Catalog: #2417

Store at: 2-8°C

For Research Use Only. Not For Use In Diagnostic Procedures.

Applications	Detection	Clonality	Isotype
Flow Cytometry	N/A	Monoclonal	Rabbit IgGκ

Format:	PE
Cross Reactivity:	Predicted to work with mouse, rat and other homologues.
Formulation:	1X PBS, 0.09% NaN ₃ , 0.2% BSA
Preparation:	Protein A+G
Reactivity:	Human, Mouse
Recommended Usage:	For flow cytometric staining, the suggested use of this reagent is 5 µL per million cells or 5 µL per 100 µL of staining volume. It is recommended that the reagent be titrated for optimal performance for each application. See product image legends for additional information.
Immunogen:	A synthetic phospho-peptide corresponding to residues surrounding Tyr507 of human phospho Lyn
Description:	Lyn, along with Btk, supports the abnormal growth and survival of neoplastic mast cells. Phosphorylated Lyn has been identified in these cancerous cells, along with phosphorylated Btk, Hck, and Stat5. Dasatinib, a chemotherapy drug used to treat leukemia, is a tyrosine kinase inhibitor that binds directly to Lyn in neoplastic cells. Lyn and Btk have also been shown to be involved in IgE receptor-dependent activation. Increased Lyn activity, detected by higher amounts of phospho Lyn, has been demonstrated in breast cancer cell lines. This is likely mediated through effects of upstream regulators of Lyn, rather than mutations in Lyn itself.
References:	Gleixner KV, et al. (2011) Blood. 28: 1077-1086. Choi Y, et al. (2010) Molecular and Cellular Pathology. 70: 2296-2306.



Flow cytometric analysis of Jurkat cells untreated (red) or treated with IFNa+IL-4+PV (green) using Phospho-Lyn (Tyr507) (5B6) Rabbit mAb (PE Conjugate) LynY507-5B6 #2417, or concentration-matched Rabbit (G9) mAb IgG Isotype Control (PE Conjugate) #2142 for cells untreated (black) or treated with IFNa+IL-4+PV (blue).