

Phospho-HS1 (Tyr397) (F12) rabbit mAb PE Conjugate

www.abwizbio.com

Support: info@abwizbio.com

Order: sales@abwizbio.com

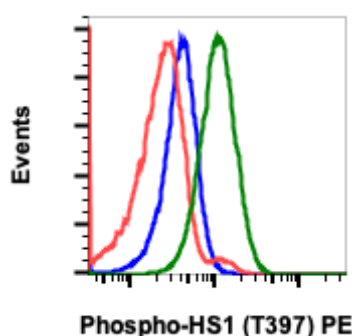
Catalog: #2397

Store at: 2-8°C

For Research Use Only. Not For Use In Diagnostic Procedures.

Applications	Detection	Clonality	Isotype
Flow Cytometry	N/A	Monoclonal	Rabbit IgGκ

Format:	PE
Cross Reactivity:	Predicted to work with mouse, rat and other homologues.
Formulation:	1X PBS, 0.09% NaN ₃ , 0.2% BSA
Preparation:	Protein A+G
Reactivity:	Human, Mouse
Recommended Usage:	For flow cytometric staining, the suggested use of this reagent is 5 µL per million cells or 5 µL per 100 µL of staining volume. It is recommended that the reagent be titrated for optimal performance for each application. See product image legends for additional information.
Immunogen:	A synthetic phospho-peptide corresponding to residues surrounding Tyr397 of human phospho HS1
Description:	HS1 is expressed in lymphoid and hematopoietic cells, and is heavily post-translationally modified. HS1 deficient mouse models have demonstrated the protein's role in receptor-mediated apoptosis and proliferation. HS1 is phosphorylated at Tyr378 and Tyr397 by the kinase Syk, providing a high-affinity binding site for SH2 domains from the Src family. Following this interaction, HS1 is then phosphorylated at Tyr222 by c-Fgr, Lyn, and Fyn kinases. HS1 plays an important role in T cell signaling, where HS1 phosphorylation recruits and activates Vav1 at the immune synapse. As a homolog of the actin binding protein cortactin, HS1 has been shown to mediate neutrophil chemotaxis through phosphorylation of tyrosines 222, 378, and 397.
References:	Brunati AM, et al., (1999) Journal of Biological Chemistry. 274:7557-7564. Cavnar PJ, et al., (2012) Journal of Biological Chemistry. 287: 25466-25477.



Flow cytometric analysis of Ramos cells untreated and unstained as negative control (blue) or untreated (red) or treated with pervanadate (green) and stained using Phospho-HS1 (Tyr397) PE conjugated antibody HS1Y397-F12. Cat. #2397.