

Phospho-NFkB p65 (Ser536) (B7) rabbit mAb FITC Conjugate

www.abwizbio.com

Support: info@abwizbio.com

Order: sales@abwizbio.com

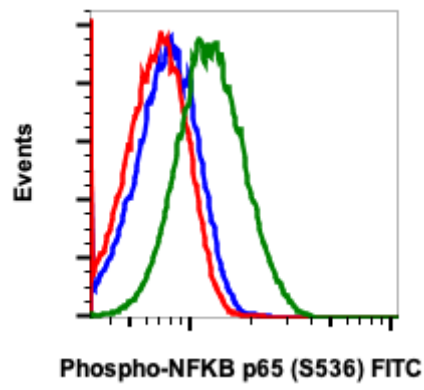
Catalog: #2393

Store at: 2-8°C

For Research Use Only. Not For Use In Diagnostic Procedures.

Applications	Detection	Clonality	Isotype
Flow Cytometry	N/A	Monoclonal	Rabbit IgGk

Format:	FITC
Cross Reactivity:	Predicted to work with mouse, rat and other homologues.
Formulation:	1X PBS, 0.09% NaN ₃ , 0.2% BSA
Preparation:	Protein A+G
Reactivity:	Human
Recommended Usage:	For flow cytometric staining, the suggested use of this reagent is 5 µL per million cells or 5 µL per 100 µL of staining volume. It is recommended that the reagent be titrated for optimal performance for each application. See product image legends for additional information.
Immunogen:	A synthetic phospho-peptide corresponding to residues surrounding Ser536 of human phospho-NFkB p65
Description:	The nuclear factor κB (NFkB)/Rel family of transcription factors play a pivotal role in inflammatory and immune responses (1,2). NF-kappa-B is present in almost all cell types and is involved in many biological processes including immunity, inflammation, cell growth and differentiation, apoptosis, and tumorigenesis. NFkB is a homo- or heterodimeric complex formed by the Rel-like domain-containing proteins RELA/p65, RELB, NFkB1/p105, NFkB1/p50, REL and NFkB2/p52. The dimers bind at κB sites in the target gene DNA. Individual dimers have distinct preferences for different κB sites and can act as either transcriptional activators or repressors. NFkB Ser536 phosphorylation stimulates Lys310 acetylation and interaction of phospho NFkB with CBP. Acetylated/phospho NFkB induces enhanced transcriptional activity.
References:	1. Baeuerle, P.A. and Henkel, T. (1994) Annu. Rev. Immunol. 12:141-179. 2. Baeuerle, P.A. and Baltimore, D. (1996) Cell. 87:13-20.



Flow cytometric analysis of HeLa cells unstained and untreated as negative control (blue) or untreated (red) or treated with TNFα plus CalA (green) and stained using phospho-NFκB p65 (Ser536) FITC conjugate antibody, NFKBP65S536-B7 Cat. #2393.