

Phospho-Shp1 (Tyr536) (2A7) rabbit mAb

www.abwizbio.com

Support: info@abwizbio.com

Order: sales@abwizbio.com

#2351

Store at: -20°C

For Research Use Only. Not For Use In Diagnostic Procedures.

Applications	Detection	Clonality	Isotype
Flow Cytometry	Anti-Rabbit IgG	Monoclonal	Rabbit IgGk

Format: Unconjugated

Cross Reactivity: Predicted to work with mouse, rat and other homologues.

Formulation: 1X PBS, 0.02% NaN₃, 50% Glycerol, 0.1% BSA

Preparation: Protein A+G

Reactivity: Human

Recommended

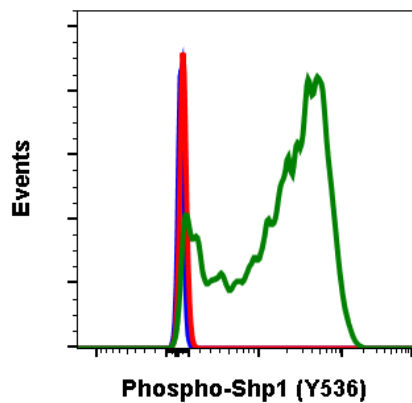
Usage: 1µg/mL ? 0.001µg/mL. It is recommended that the reagent be titrated for optimal performance for each application. See product image legends for additional information.

Immunogen: A synthetic phospho-peptide corresponding to residues surrounding Tyr536 of human phospho Shp1

Description: Src homology-2 domain containing phosphatase-1 (Shp1) typically functions as a negative regulator for signal transduction, interacting with Zap70, CD5, CD3?, and IL-2R in T cells. Shp1 suppresses cellular signaling by dephosphorylating target proteins. Shp1 is expressed predominantly in hematopoietic cells, where it can plays a role in malignant transformation into cancer cells. Methylation of the Shp1 promoter has been shown to silence Shp1 expression and promote the development of cancer. Shp1 negatively regulates PDGF and insulin tyrosine receptor pathways, and negatively regulates Lck in the TCR signaling pathway to limit TCR responsiveness. Shp1 activity is prevented by TAOK3 in T cells to allow for T cell activation and differentiation.

References:

Oka T, Ouchida M, Koyama M, et al. (2002) Cancer Research. 62:6390-6394.
Geraldes P, Hiraoka-Yamamoto J, Matsumoto M, Clermont A, Leitges M, Marette A, Aiello LP, Kern TS, and King GL. (2009) Nature Medicine. 15:1298-1306.
Ormonde JVS, Li Z, Stegen C, and Madrenas J. (2018) Journal of Immunology 201:3431-3442.



Flow cytometric analysis of Ramos cells secondary antibody only negative control (blue) or untreated (red) or treated with pervanadate (green) using Phospho-Shp1 (Tyr536) antibody Shp1Y536-2A7 at 0.1 $\mu\text{g/mL}$. Cat. #2351.