

Cleaved PARP (Asp214) (H8) rabbit mAb FITC conjugate

www.abwizbio.com

Support: info@abwizbio.com

Order: sales@abwizbio.com

Catalog: #2333

Store at: 2-8°C

For Research Use Only. Not For Use In Diagnostic Procedures.

Applications

Flow Cytometry

Detection

N/A

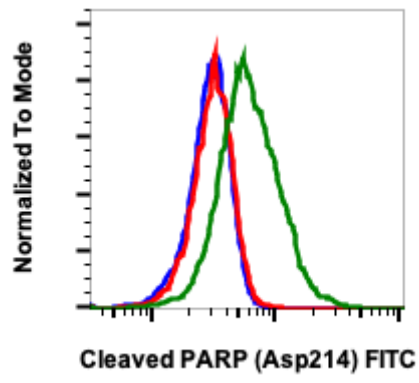
Clonality

Monoclonal

Isotype

Rabbit IgGk

Format:	FITC
Cross Reactivity:	Predicted to work with mouse, rat and other homologues.
Formulation:	1X PBS, 0.09% NaN ₃ , 0.2% BSA
Preparation:	Protein A+G
Reactivity:	Human
Recommended Usage:	For flow cytometric staining, the suggested use of this reagent is 5 µL per million cells or 5 µL per 100 µL of staining volume. It is recommended that the reagent be titrated for optimal performance for each application. See product image legends for additional information.
Immunogen:	A synthetic peptide corresponding to residues surrounding Asp214 of human PARP
Description:	Poly-ADP-ribose polymerase 1 (PARP-1), is a substrate of caspase-3 and caspase-7, both of which play a dominant role in apoptosis. PARP is cleaved into 89 and 24 kDa fragments at Asp214. The detection of these fragments is used as an indicator of caspase activation and apoptosis induction for many cell lines. Under normal conditions, PARP aids in the detection and repair of DNA damage. With 1-2 million copies per nucleus, PARP is also involved in poly (ADP-ribosyl)ation, a post-translational protein modification mechanism used to modify chromatin structure and regulate transcription. Decreased PARP activity has been shown to lead to loss of memory and neuronal cell death.
References:	Bressenot A, Marchal S, Bezdetsnaya L, Garrier J, Guillemin F, and Plenat F. (2009) Journal of Histochemistry and Cytochemistry. 57: 289-300. Chaitanya GV, Alexander JS, and Babu, PP. (2010) Cell Communication and Signaling. 8:31. Kraus WL, and Lis JT. (2003) Cell. 113:677-683.



Flow cytometric analysis of SK.N.MC cells unstained and untreated as negative control (blue) or untreated (red) or treated with staurosporine (green) and stained using Cleaved PARP (Asp214) antibody PARP-H8 FITC conjugate. Cat. #2333.