

Phospho-Lck (Tyr505) (A3) rabbit mAb FITC conjugate

www.abwizbio.com

Support: info@abwizbio.com

Order: sales@abwizbio.com

Catalog: #2303

Store at: 2-8°C

For Research Use Only. Not For Use In Diagnostic Procedures.

Applications	Detection	Clonality	Isotype
Flow Cytometry	N/A	Monoclonal	Rabbit IgGκ

Format: FITC

Cross Reactivity: Predicted to work with mouse, rat and other homologues.

Formulation: 1X PBS, 0.09% NaN₃, 0.2% BSA

Preparation: Protein A+G

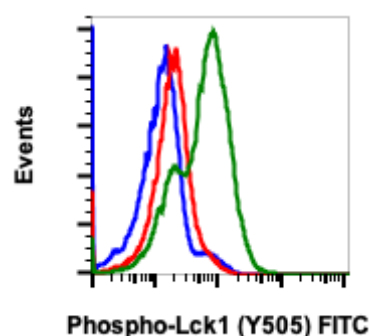
Reactivity: Human

Recommended Usage: For flow cytometric staining, the suggested use of this reagent is 5 µL per million cells or 5 µL per 100 µL of staining volume. It is recommended that the reagent be titrated for optimal performance for each application. See product image legends for additional information.

Immunogen: A synthetic phospho-peptide corresponding to residues surrounding Tyr505 of human phospho Lck

Description: Lck is a member of the Src family of non-receptor tyrosine kinases and plays a major role in T cell activation. Lck activates many downstream signaling pathways including Akt/mTOR, SAPK/JNK, PLCγ1, and RAS/MAPK. Phosphorylation of Lck at Tyr394 in the catalytic domain at the ATP-binding site stabilizes the open and active form, while phosphorylation at Tyr505 in the C-terminal domain promotes the closed, inactive conformation. Multiple small-molecule drugs used to treat leukemia have been shown to target inhibition of Lck, including imatinib and dasatinib. Lck is thus a promising target for suppressing T-cell responses for the treatment of inflammatory diseases or after organ transplantation.

References: Serafin V, Capuzzo G, Milani G, et al. (2017) Blood. 130: 2750-2761.
Lee KC, Ouwehand I, Giannini AL, et al. (2010) Leukemia. 24: 896-900.



Flow cytometric analysis of Daudi Human Burkitt's lymphoma cells untreated and unstained as negative control (blue) or untreated (red) or treated with IFNa +IL4 +PV and stained (green) using Phospho-LCK (Y505) antibody LCKY505-A3 FITC conjugate. Cat. #2303