

Phospho-BAD (Ser112) (B9) rabbit mAb SureLight 488 conjugate

www.abwizbio.com

Support: info@abwizbio.com

Order: sales@abwizbio.com

Catalog: #2250

Store at: 2-8°C

For Research Use Only. Not For Use In Diagnostic Procedures.

Applications

Flow Cytometry

Detection

N/A

Clonality

Monoclonal

Isotype

Rabbit IgGL

Format: SureLight 488

Cross Reactivity: Predicted to work with mouse, rat and other homologues.

Formulation: 1X PBS, 0.09% NaN₃, 0.2% BSA

Preparation: Protein A+G

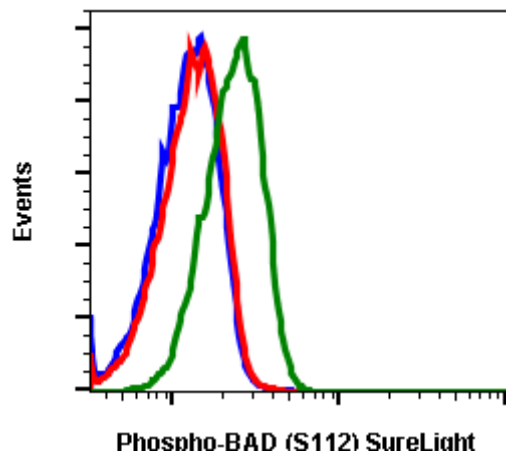
Reactivity: Human, Mouse, Rat

Recommended Usage: For flow cytometric staining, the suggested use of this reagent is 5 µL per million cells or 5 µL per 100 µL of staining volume. It is recommended that the reagent be titrated for optimal performance for each application.

Immunogen: A synthetic phospho-peptide corresponding to residues surrounding Ser112 of human phospho BAD

Description: Human BCL-2-associated death promoter (BAD) regulates apoptosis by binding to anti-apoptotic members of BCL family including BCL-2, BCL-xL, and BCL-w. The BAD protein signal transduction activity is regulated by multiple kinases and phosphatases. Non-phosphorylated BAD protein selectively dimerizes with Bcl-xL and Bcl-2 displacing Bax, which is then free to initiate mitochondrial membrane permeability, initiating apoptosis. When phosphorylated, BAD is unable to heterodimerize with Bcl-2 or Bcl-xL and is sequestered into the cytosolic compartment by binding to 14-3-3 protein. BAD protein has been shown to phosphorylated at multiple sites. The phosphorylation of 3 serine residues (Ser112, Ser136 and Ser155) effects the activity of the BAD. Multiple kinases phosphorylate BAD at these serine site. Ribosomal protein S6 kinase alpha-1 (RPS6KA1/RSK) and cAMP-dependent protein kinase phosphorylated BAD at Ser112 while protein kinase B (PKB/Akt) phosphorylates BAD at Ser136 residue. Phosphorylation of BAD at Ser-155 is preferentially carried out by Protein Kinase A. Other BAD phosphorylation sites may regulation cellular localization of BAD. Phosphorylation of both Ser75 and Ser99 increases sequestration of BAD by 14-3-3 protein which leads to translocation of BAD from the mitochondria to the cytosol. This prevents BAD from binding to anti-apoptotic proteins. Phosphorylation at Ser99 also prevents BAD from binding to the hydrophobic groove of Bcl-2 and Bcl-XL.

References: Czabotar PE., et al., (2014) Nat Rev Mol Cell Biol 15:49-63.
Polzien L., et al., (2009) J Biol Chem 284:28004-28020.
Masters SC., et al., (2001) Mol Pharmacol 60: 1325-1331.
Datta SR., et al., (1997) Cell 91:231-241.
Harada H., et al., (1999) Mol Cell 3:413-422.
Chiang CW et al., (2001) Blood 97:1289-1297.



Flow cytometric analysis of COS7 cells unstained and untreated as negative control (blue) or stained untreated (red) or cell treated with TPA + Calyculin A (green) using Phospho-BAD (Ser112) antibody BADA5112-B9 SureLight488-conjugated. Cat #2250.