

Phospho-MKK3 (S189)/MKK6 (S207) (D3) rabbit mAb FITC conjugate

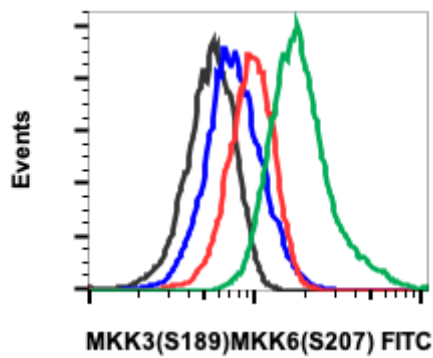
www.abwizbio.com
Support: info@abwizbio.com
Order: sales@abwizbio.com

Catalog: #2243

Store at: 2-8°C

For Research Use Only. Not For Use In Diagnostic Procedures.

Applications	Detection	Clonality	Isotype
Flow Cytometry	N/A	Monoclonal	Rabbit IgGκ
Format:	FITC		
Cross Reactivity:	Predicted to work with mouse, rat and other homologues.		
Formulation:	1X PBS, 0.09% NaN3, 0.2% BSA		
Preparation:	Protein A+G		
Reactivity:	Human,Mouse		
Recommended Usage:	For flow cytometric staining, the suggested use of this reagent is 5 μL per million cells or 5 μL per 100 μL of staining volume. It is recommended that the reagent be titrated for optimal performance for each application. See product image legends for additional information.		
Immunogen:	A synthetic phospho-peptide corresponding to residues surrounding Ser189 of human phospho MKK3 and Ser207 of human phospho MKK6.		
Description:	MKK3 and MKK6 are closely related dual-specificity protein kinases that activate p38 MAP kinase (1-5). Phospho MKK3 and phospho MKK6 both phosphorylate and activate p38. p38 phosphorylation dramatically stimulates its ability to phosphorylate protein substrates such as ATF-2 and Elk-1. MKK3 and MKK6 are both activated by different forms of cellular stress and inflammatory cytokines (4,5). Phospho MKK3 and phospho MKK6 activation occurs through phosphorylation at S189 and T222 on MKK3 (2) and S207 and T211 on MKK6 (4,5).		
References:	1. Derijard, B. et al. (1995) Science 267, 682-5. 2. Raingeaud, J. et al. (1995) J Biol Chem 270, 7420-6. 3. Sluss, H.K. et al. (1994) Mol. Cell. Biol. 14, 8376-84. 4. Raingeaud, J. et al. (1996) Mol. Cell. Biol. 16(3), 1247-55. 5. Han, J. et al. (1996) J. Biol. Chem. 271, 2886-91.		



Flow cytometric analysis of HEK293 cells treated with K252a (red) or treated with UV+TPA (green) using Phospho-MKK3(Ser189)/MKK6(Ser207) (D3) Rabbit mAb (FITC Conjugate), MKK3S189MKK6S207-D3 #2243, or concentration-matched Rabbit (G9) mAb IgG Isotype Control (FITC Conjugate) #2143 for cells treated with K252a (black) or treated with UV+TPA (blue).