

# Phospho-PTEN (Ser380) (NA9) rabbit mAb SureLight488 conjugate

[www.abwizbio.com](http://www.abwizbio.com)

Support: [info@abwizbio.com](mailto:info@abwizbio.com)

Order: [sales@abwizbio.com](mailto:sales@abwizbio.com)

Catalog: #2240

Store at: 2-8°C

For Research Use Only. Not For Use In Diagnostic Procedures.

## Applications

Flow Cytometry

## Detection

N/A

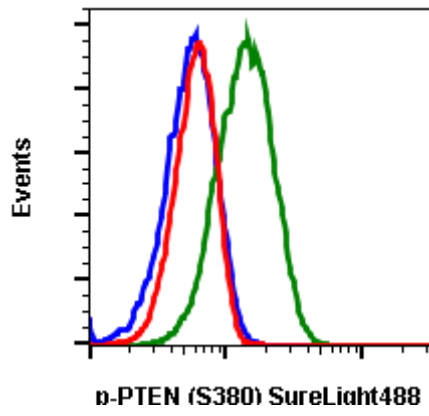
## Clonality

Monoclonal

## Isotype

Rabbit IgGk

<b>Format:</b>	SureLight 488
<b>Cross Reactivity:</b>	Predicted to work with mouse, rat and other homologues.
<b>Formulation:</b>	1X PBS, 0.09% NaN <sub>3</sub> , 0.2% BSA
<b>Preparation:</b>	Protein A+G
<b>Reactivity:</b>	Human, Mouse
<b>Recommended Usage:</b>	For flow cytometric staining, the suggested use of this reagent is 5 µL per million cells or 5 µL per 100 µL of staining volume. It is recommended that the reagent be titrated for optimal performance for each application.
<b>Immunogen:</b>	A synthetic phospho peptide corresponding to residues surrounding Ser380 of human phospho PTEN
<b>Description:</b>	PTEN has been identified as a tumor suppressor gene and has been found to be mutated in a significant number of human cancers, including prostate, brain, and breast cancer. PTEN shares sequence homology with the protein-tyrosine phosphatase (PTPase) family of proteins and negatively regulates the PI3K/Akt pathway. PTEN de-phosphorylates target proteins, and recombinant PTEN has been shown to have phosphoinositide 3-phosphatase and inositol phosphate 3-phosphatase activity. Studies of primary tumor cells show a loss of PTEN expression after metastasis to the brain, via astrocyte-derived microRNAs. A cluster of phosphorylation sites (S380, T382, T383, and S385) in the C-terminal tail of PTEN drive a conformational change that reduces PTEN activity by inhibiting membrane interactions.
<b>References:</b>	Li J, Yen C, Liaw D, et al. (1997) Science. 275:1943-1947. Maehama T, and Dixon JE. (1998) Journal of Biological Chemistry. 273:13375-13378. Zhang L, Zhang S, You J, et al. (2015) Nature. 527:100-104. Chen Z, Dempsey DR, Thomas SN, Hayward D, Bolduc DM, and Cole PA. (2016) Journal of Biological Chemistry. 291:14160-14169.



Flow cytometric analysis of A431 cells, untreated and unstained as negative control (blue) or untreated and stained (green) or treated with lambda phosphatase and stained (red) using Phospho-PTEN (S380) antibody, PTENS380-NA9 SureLight488 conjugate, Cat. #2240.