

Phospho-Histone H2A.X (Ser139) (1E4) rabbit mAb PE conjugate

www.abwizbio.com

Support: info@abwizbio.com

Order: sales@abwizbio.com

#2232

Store at: 2-8°C

For Research Use Only. Not For Use In Diagnostic Procedures.

Applications	Detection	Clonality	Isotype
Flow Cytometry	N/A	Monoclonal	Rabbit IgGk

Format: PE

Cross Reactivity: Predicted to work with mouse, rat and other homologues.

Formulation: 1X PBS, 0.09% NaN₃, 0.2% BSA

Preparation: Protein A+G

Reactivity: Human, Mouse

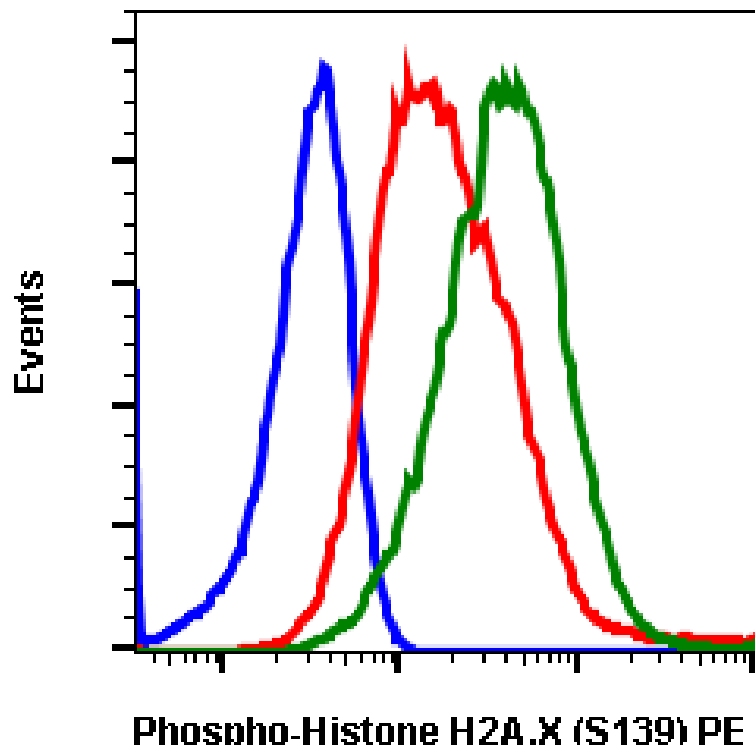
Recommended

Usage: For flow cytometric staining, the suggested use of this reagent is 5 µL per million cells or 5 µL per 100 µL of staining volume. It is recommended that the reagent be titrated for optimal performance for each application.

Immunogen: A synthetic phospho-peptide corresponding to residues surrounding Ser139 of human phospho histone H2A.X.

Description: Histone H2AX is a variant of the nucleosome core histone H2A and is phosphorylated at Ser139 in response to DNA damage. Histone H2AX phosphorylation is considered a specific reporter of double-strand DNA breaks. The protein is also referred to as γH2AX when phosphorylated at Ser139. H2AX phosphorylation is especially strong in response to double-strand breaks formed during apoptosis. However, physiological phosphorylation of Histone H2AX occurs when double-strand DNA breaks are formed during meiosis and V(D)J recombination. A549 and DU145 cell lines have been found to have higher expression levels of phosphorylated Histone H2AX compared to Jurkat, MCF-7, or HL-60 cell lines.

References: Tanaka T, Halicka D, Huang X, et al. (2006) Cell Cycle. 5: 1940-1945.



Flow cytometric analysis of 293T cells unstained untreated (blue) or stained untreated (red) or treated with UV and TPA (green) using phospho-Histone H2A.X (Ser139) antibody HisH2AXS139-1E4 PE conjugate. Cat. #2232.