

# Phospho-PLCγ1 (Tyr783) (C4) rabbit mAb APC conjugate

[www.abwizbio.com](http://www.abwizbio.com)

Support: [info@abwizbio.com](mailto:info@abwizbio.com)

Order: [sales@abwizbio.com](mailto:sales@abwizbio.com)

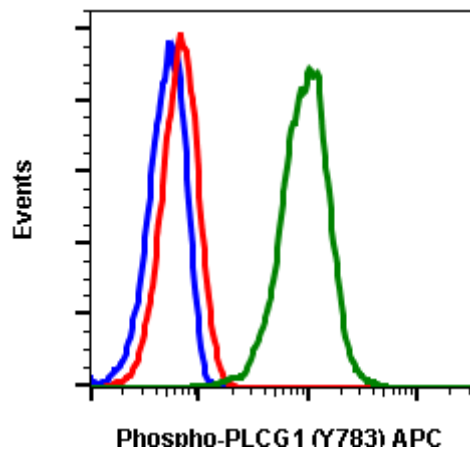
**Catalog:** #2204

**Store at:** 2-8°C

*For Research Use Only. Not For Use In Diagnostic Procedures.*

Applications	Detection	Clonality	Isotype
Flow Cytometry	N/A	Monoclonal	Rabbit IgGκ

<b>Format:</b>	APC
<b>Cross Reactivity:</b>	Predicted to work with mouse, rat and other homologues.
<b>Formulation:</b>	1X PBS, 0.09% NaN <sub>3</sub> , 0.2% BSA
<b>Preparation:</b>	Protein A+G
<b>Reactivity:</b>	Human, Mouse
<b>Recommended Usage:</b>	For flow cytometric staining, the suggested use of this reagent is 5 µL per million cells or 5 µL per 100 µL of staining volume. It is recommended that the reagent be titrated for optimal performance for each application.
<b>Immunogen:</b>	A synthetic phospho-peptide corresponding to residues surrounding Tyr783 of human phospho PLCγ1.
<b>Description:</b>	The Phospholipase C (PLC) isozymes hydrolyze phosphatidyl inositolphosphate to inositol triphosphate and diacylglycerol. In response to extracellular stimuli such as hormones, growth factors and neurotransmitters, PLC hydrolyzes phosphatidylinositol 4,5-bisphosphate (PIP <sub>2</sub> ) to generate diacylglycerols (DAGs) and water-soluble phosphorylated derivatives, such as inositol 1,4,5-triphosphate (IP <sub>3</sub> ). Within the PLC family, PLCγ is the only member that contains SH2 and SH3 domains, necessary for phospho PLCγ activation. Phospho PLCγ, upon activation, can interact with receptor tyrosine kinases.
<b>References:</b>	<ol style="list-style-type: none"><li>1. Singer, W.D. et al. (1997) Annu. Rev. Biochem. 66, 475-509.</li><li>2. Hernandez D, et al. (1994) Genomics 23 (2): 504-507.</li><li>3. Smrcka, A.V. et al. (1991) Science 251, 804-807.</li><li>4. Taylor, S.J. et al. (1991) Nature 350, 516-518.</li></ol>



Flow cytometric analysis of Hela cells secondary antibody only negative control (blue) or treated with imatinib (red) or with pervanadate (green) using Phospho-PLCγ1 (Tyr783) APC-conjugated antibody PLCγ1Y783-C4. Cat. #2204.