

# Phospho-Chk1 (Ser317) (F10) rabbit mAb FITC conjugate

[www.abwizbio.com](http://www.abwizbio.com)

Support: [info@abwizbio.com](mailto:info@abwizbio.com)

Order: [sales@abwizbio.com](mailto:sales@abwizbio.com)

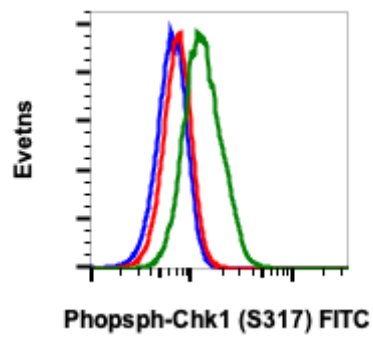
**Catalog:** #2153

**Store at:** 2-8°C

*For Research Use Only. Not For Use In Diagnostic Procedures.*

Applications	Detection	Clonality	Isotype
Flow Cytometry	N/A	Monoclonal	Rabbit IgGκ

<b>Format:</b>	FITC
<b>Cross Reactivity:</b>	Predicted to work with mouse, rat and other homologues.
<b>Formulation:</b>	1X PBS, 0.09% NaN <sub>3</sub> , 0.2% BSA
<b>Preparation:</b>	Protein A+G
<b>Reactivity:</b>	Human, Mouse
<b>Recommended Usage:</b>	For flow cytometric staining, the suggested use of this reagent is 5 µL per million cells or 5 µL per 100 µL of staining volume. It is recommended that the reagent be titrated for optimal performance for each application. See product image legends for additional information.
<b>Immunogen:</b>	A synthetic phospho-peptide corresponding to residues surrounding Ser317 of human phospho Chk1
<b>Description:</b>	<p>The act of DNA damaged response and cell cycle checkpoints requires the activation of four protein kinases that form the canonical ATR-Chk1 and ATM-Chk2 pathways. ATR activation requires the generation of structures containing single strand DNA (ssDNA) adjacent to double strand DNA (dsDNA). Such ssDNA is coated with replication protein A complex and attracts ATR (1,2). The accumulation of ATR to damage sites results in initial activation of ATR. ATR phosphorylates proteins at the ssDNA which are called checkpoint regulators. The accumulation and phosphorylation of these checkpoint regulators further stimulates the catalytic activity of ATR. ATR-induced Chk1 phosphorylation likely occurs at the sites of DNA damage on chromatin (3-5). The activated ATR phosphorylates Chk1 at Ser317 and Ser345 in its C-terminal regulatory domain. Phospho Chk1 is critical for DNA damage checkpoint activation, replication control, and cell viability (6-8). Functionally, ATR-mediated phosphorylation elevates phospho Chk1 catalytic activity. The N-terminal catalytic domain of Chk1 adopts an open kinase conformation and the deletion of C-terminal domain increases Chk1 catalytic activity.</p>
<b>References:</b>	<ol style="list-style-type: none"><li>1. Caprelli ML, et al. (2013) Cell Cycle, 12: 916-22.</li><li>2. Capasso H, et al. (2002) J. Cell Sci. 115: 4555-64.</li><li>3. Carrassa L, et al. (2011) Cell Cycle 10: 2121-8.</li><li>4. Chen MS, et al. (2003) Mol. Cell Biol. 23: 7488-97.</li><li>5. Ciccio A, et al. Mol. Cell 40: 179-204.</li><li>6. Cimprich CA, (2014) Oncogene 33: 3351-60</li><li>7. Cremona CA, et al. (2014) Oncogene 33: 3351-60.</li><li>8. Niida H, et al. (2007) Mol. Cell Biol. 27: 2572-81.</li></ol>



Flow cytometric analysis of Hela cells treated with imatinib and unstained as negative control (blue) or treated with imatinib (red) or treated with pervanadate (green) and stained using phospho-Chk1 (S317) antibody Chk1S317-F10 FITC conjugate. Cat. #2153.