

Isotype Control (G9) rabbit mAb APC Conjugate

www.abwizbio.com

Support: info@abwizbio.com

Order: sales@abwizbio.com

Catalog: #2144

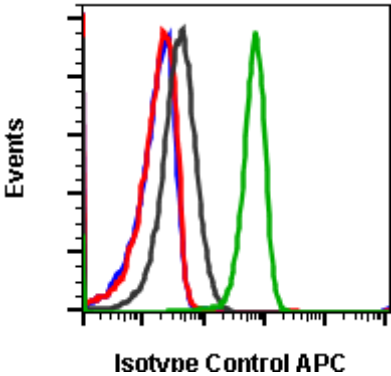
Store at: 2-8°C

For Research Use Only. Not For Use In Diagnostic Procedures.

Applications	Detection	Clonality	Isotype
Flow Cytometry	N/A	Monoclonal	Rabbit IgGk

Format:	APC
Cross Reactivity:	None Known
Formulation:	1X PBS, 0.09% NaN ₃ , 0.2% BSA
Preparation:	Protein A+G
Reactivity:	Other
Recommended Usage:	Isotype control antibodies should be used at the same concentration as the test antibody.
Immunogen:	Keyhole limpet hemocyanin carrier protein.
Description:	<p>This product is useful as an isotope control for rabbit IgG, especially in comparison to Abwiz recombinant rabbit antibodies. In all assays tested, we have not observed any significant non-specific binding from this antibody. This includes flow cytometry, Western blot, ELISA, and biolayer interferometry (Octet). We obtained this antibody from a mouse immunized with keyhole limpet hemocyanin (KLH). This antibody binds to specifically to KLH, an antigen not expressed on human cells, mouse cells, or other species. In contrast to isotype antibodies supplied by other vendors, which have unknown or unreported specificity, we let you know the target of this antibody so that you can determine if it is suitable as a control for your specific assay.</p>

References:



Flow cytometric analysis of U937 cells using rabbit (G9) mAb Isotype Control (APC Conjugate) for untreated (blue) or treated with IFN α (Red) compared to Phospho-Src (Tyr416) (C4) rabbit mAb (APC conjugate#2074) untreated (black) or IFN α treated (green) cells. Cat. #2144.