

# Phospho-SLP-76 (Tyr128) (3F8) rabbit mAb PE conjugate

[www.abwizbio.com](http://www.abwizbio.com)

Support: [info@abwizbio.com](mailto:info@abwizbio.com)

Order: [sales@abwizbio.com](mailto:sales@abwizbio.com)

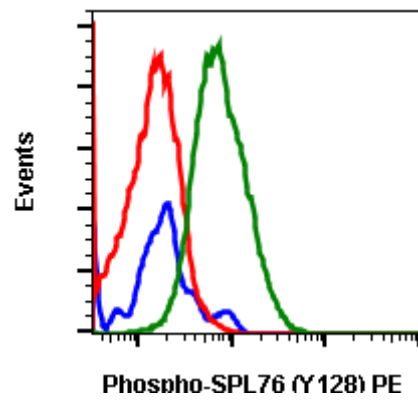
**Catalog:** #2137

**Store at:** 2-8°C

*For Research Use Only. Not For Use In Diagnostic Procedures.*

Applications	Detection	Clonality	Isotype
Flow Cytometry	N/A	Monoclonal	Rabbit IgGκ

<b>Format:</b>	PE
<b>Cross Reactivity:</b>	Predicted to work with mouse, rat and other homologues.
<b>Formulation:</b>	1X PBS, 0.09% NaN <sub>3</sub> , 0.2% BSA
<b>Preparation:</b>	Protein A+G
<b>Reactivity:</b>	Human, Mouse
<b>Recommended Usage:</b>	For flow cytometric staining, the suggested use of this reagent is 5 µL per million cells or 5 µL per 100 µL of staining volume. It is recommended that the reagent be titrated for optimal performance for each application.
<b>Immunogen:</b>	A synthetic phospho-peptide corresponding to residues surrounding Tyr128 of human phospho SLP-76
<b>Description:</b>	SH2 Domain-Containing Leukocyte Protein Of 76 KDa (SLP-76) is an adaptor protein that plays a role in signal transduction in T cells. Studies using a SLP-76-deficient T cell line have demonstrated that SLP-76 is required for optimal phosphorylation and activation of both PLCγ1 and the Ras pathway. SLP-76 phosphorylation is mediated by Zap70 upon TCR stimulation. Within an N-terminal acidic region, SLP-76 possesses three tyrosines (Tyr113, 128, and 145), which are phosphorylated upon activation. The sterile α-motif (SAM) domain of SLP-76 drives formation of dimers and higher order oligomers. SLP-76 micro-clusters at the immunological synapse enhance signal transduction and T cell activation.
<b>References:</b>	Zhang MS, Tran PM, Wolff AJ, Tremblay MM, Fosdick MG, and Houtman JCD. (2018) Science Signaling. 11:eaam9095. Yablonski D, Kuhne MR, Kadlecsek T, and Weiss A. (1998) Science. 281:413-416. Thaker YR, Recino A, Raab M, Jabeen A, Wallberg M, Fernandez N, and Rudd CE. (2017) Journal of Biological Chemistry. 292:6281-6290.



Flow cytometric analysis of Ramos cells unstained cells negative control (blue) or untreated (red) or treated with pervanadate (green) using Phospho-SLP-76 (Tyr128) antibody SLP76Y128-3F8 PE-conjugated. Cat. #2137.