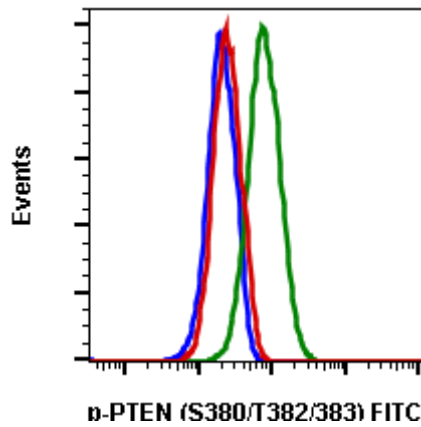


For Research Use Only. Not For Use In Diagnostic Procedures.

Applications	Detection	Clonality	Isotype
Flow Cytometry	N/A	Monoclonal	Rabbit IgGk

Format:	FITC
Cross Reactivity:	Predicted to work with mouse, rat and other homologues.
Formulation:	1X PBS, 0.09% NaN ₃ , 0.2% BSA
Preparation:	Protein A+G
Reactivity:	Human, Mouse
Recommended Usage:	For flow cytometric staining, the suggested use of this reagent is 5 µL per million cells or 5 µL per 100 µL of staining volume. It is recommended that the reagent be titrated for optimal performance for each application.
Immunogen:	A synthetic phospho-peptide corresponding to residues surrounding Ser380 and Thr382/383 of human phospho PTEN
Description:	PTEN has been identified as a tumor suppressor gene and has been found to be mutated in a significant number of human cancers, including prostate, brain, and breast cancer. PTEN shares sequence homology with the protein-tyrosine phosphatase (PTPase) family of proteins and negatively regulates the PI3K/Akt pathway. PTEN de-phosphorylates target proteins, and recombinant PTEN has been shown to have phosphoinositide 3-phosphatase and inositol phosphate 3-phosphatase activity. Studies of primary tumor cells show a loss of PTEN expression after metastasis to the brain, via astrocyte-derived microRNAs. A cluster of phosphorylation sites (S380, T382, T383, and S385) in the C-terminal tail of PTEN drive a conformational change that reduces PTEN activity by inhibiting membrane interactions.
References:	Li J, Yen C, Liaw D, et al. (1997) Science. 275:1943-1947. Maehama T, and Dixon JE. (1998) Journal of Biological Chemistry. 273:13375-13378. Zhang L, Zhang S, You J, et al. (2015) Nature. 527:100-104. Chen Z, Dempsey DR, Thomas SN, Hayward D, Bolduc DM, and Cole PA. (2016) Journal of Biological Chemistry. 291:14160-14169.



Flow cytometric analysis of A431 cells, unstained and untreated cells as negative control (blue) or stained and untreated (green) or treated with lambda phosphatase (red) using Phospho-PTEN (Ser380/Thr382/383) antibody, PTENS380T382383-E4 FITC conjugate Cat. #2133.