

Phospho-Btk (Tyr223) (B4) rabbit mAb SureLight 488 conjugate

www.abwizbio.com

Support: info@abwizbio.com

Order: sales@abwizbio.com

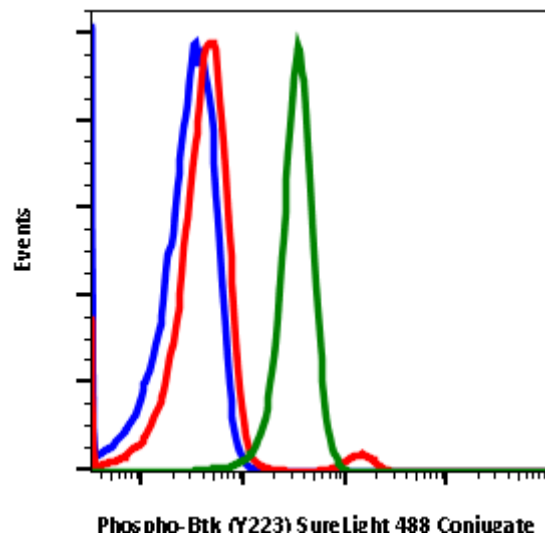
Catalog: #1175

Store at: 2-8°C

For Research Use Only. Not For Use In Diagnostic Procedures.

Applications	Detection	Clonality	Isotype
Flow Cytometry	N/A	Monoclonal	Rabbit IgGk

Format:	SureLight 488
Cross Reactivity:	Predicted to work with mouse, rat and other homologues.
Formulation:	1X PBS, 0.09% NaN ₃ , 0.2% BSA
Preparation:	Protein A+G
Reactivity:	Human, Mouse
Recommended Usage:	For flow cytometric staining, the suggested use of this reagent is 5 µL per million cells or 5 µL per 100 µL of staining volume. It is recommended that the reagent be titrated for optimal performance for each application.
Immunogen:	A synthetic phospho-peptide corresponding to residues surrounding Tyr223 of human phospho Btk
Description:	Btk is a major node in the B-cell receptor signaling pathway, where it regulates B cell maturation, activation, survival, differentiation, and proliferation. Btk is activated by Src family kinases, including Lyn, which phosphorylates Btk at Tyr551. Upon phosphorylation at this site, Btk is recruited to the plasma membrane where autophosphorylation at Tyr223 occurs. The Btk signaling pathway is a major target of small molecule inhibitors for B-cell lymphoma, autoimmune diseases, and non-Hodgkin's lymphomas. These inhibitors either form a covalent bond at Cys481 in the ATP-binding site or serve as reversible inhibitors that bind the SH3 pocket and stabilize inactive Btk.
References:	Liang, C, Tian D, Ren X, et al. (2018) European Journal of Medicinal Chemistry. 151: 315-326.



Flow cytometric analysis of U937 cells unstained cells negative control (blue) or untreated (red) or treated with IFNα IL4 and PV (green) using Phospho-Btk (Tyr223) B4 SureLight® 488 conjugated antibody BtkY223-B4 Cat. #1175.