

Phospho-Btk (Tyr223) (B4) rabbit mAb

www.abwizbio.com

Support: info@abwizbio.com

Order: sales@abwizbio.com

Catalog: #1171

Store at: -20°C

For Research Use Only. Not For Use In Diagnostic Procedures.

Applications
Flow Cytometry

Detection
Anti-Rabbit IgG

Clonality
Monoclonal

Isotype
Rabbit IgGk

Format: Unconjugated

Cross Reactivity: Predicted to work with mouse, rat and other homologues.

Formulation: 1X PBS, 0.02% NaN₃, 50% Glycerol, 0.1% BSA

Preparation: Protein A+G

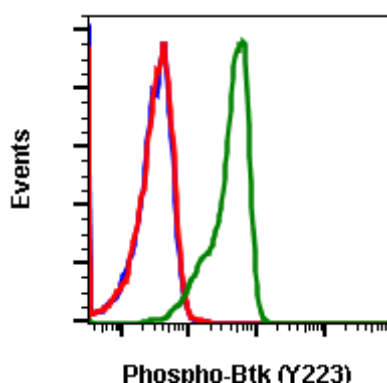
Reactivity: Human, Mouse

Recommended Usage: 1µg/mL – 0.001µg/mL. It is recommended that the reagent be titrated for optimal performance for each application. See product image legends for additional information.

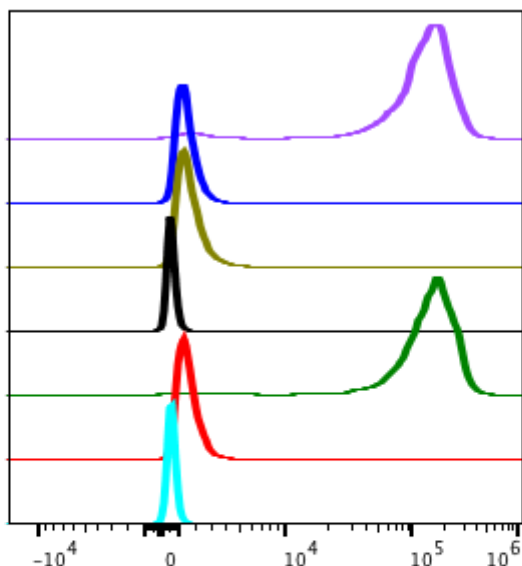
Immunogen: A synthetic phospho-peptide corresponding to residues surrounding Tyr223 of human phospho Btk

Description: Btk is a major node in the B-cell receptor signaling pathway, where it regulates B cell maturation, activation, survival, differentiation, and proliferation. Btk is activated by Src family kinases, including Lyn, which phosphorylates Btk at Tyr551. Upon phosphorylation at this site, Btk is recruited to the plasma membrane where autophosphorylation at Tyr223 occurs. The Btk signaling pathway is a major target of small molecule inhibitors for B-cell lymphoma, autoimmune diseases, and non-Hodgkin's lymphomas. These inhibitors either form a covalent bond at Cys481 in the ATP-binding site or serve as reversible inhibitors that bind the SH3 pocket and stabilize inactive Btk.

References: Liang, C, Tian D, Ren X, et al. (2018) European Journal of Medicinal Chemistry. 151: 315-326.

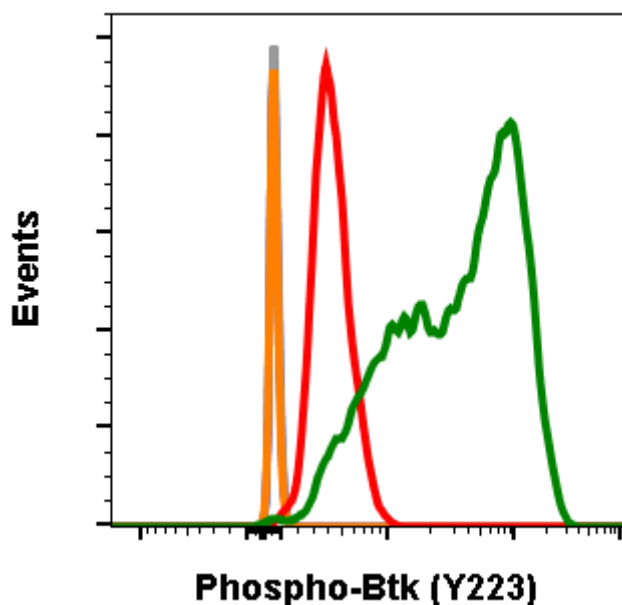


Flow cytometric analysis of U937 cells secondary antibody only negative control (blue) or untreated (red) or treated with IFN α IL4 and PV (green) using 5 ng/mL of Phospho-Btk (Tyr223) antibody BtkY223-B4 Cat. #1171.



	IgG	Treatment	Peptide Block	Median : BL1-A
	B4	IFN	Non-phos.	132495
	B4	Ctrl	Non-phos.	1318
	B4	IFN	Phospho.	1444
	B4	Ctrl	Phospho.	521
	B4	IFN	-	147788
	B4	Ctrl	-	1392
	2' only	Ctrl	-	550

Peptide blocking flow cytometric analysis of U937 cells secondary antibody only negative control (light blue) or untreated (red) or IFN α + IL4 + pervanadate-treated (green) or untreated and blocked with phospho-peptide (black) or treated and blocked with phospho peptide (gold) or untreated and blocked with non-phospho peptide (dark blue) or treated and blocked with non-phospho peptide (purple) Phospho-Btk (Tyr223) antibody BtkY223-B4 at 0.025 μ g/mL. Cat. #1171.



Flow cytometric analysis of 3T3 cells secondary antibody only negative control (blue) or untreated (grey) or treated with IFN α + IL4 + pervanadate (orange) using 0.05 μ g/mL isotype control Cat. #2141, or untreated (red) or treated (green) using Phospho-Btk (Tyr223) antibody BtkY223-B4 at 0.05 μ g/mL. Cat. #1171.