

Phospho-p38 MAPK (Thr180/Tyr182) (E3) rabbit mAb SureLight488 Conjugate

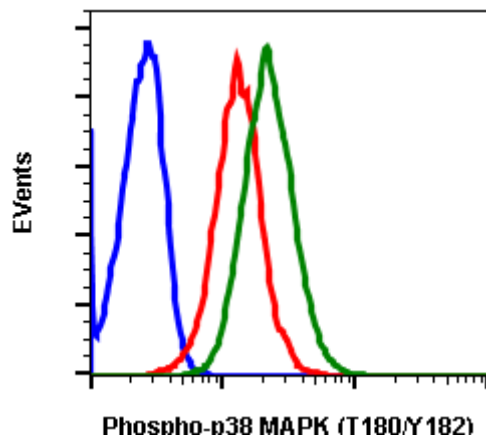
www.abwizbio.com
Support: info@abwizbio.com
Order: sales@abwizbio.com

Catalog: #1160

Store at: 2-8°C

For Research Use Only. Not For Use In Diagnostic Procedures.

Applications	Detection	Clonality	Isotype
Flow Cytometry	N/A	Monoclonal	Rabbit IgGκ
Format:	SureLight 488		
Cross Reactivity:	Predicted to work with mouse, rat and other homologues.		
Formulation:	1X PBS, 0.09% NaN ₃ , 0.2% BSA		
Preparation:	Protein A+G		
Reactivity:	Human,Mouse		
Recommended Usage:	For flow cytometric staining, the suggested use of this reagent is 5 μL per million cells or 5 μL per 100 μL of staining volume. It is recommended that the reagent be titrated for optimal performance for each application.		
Immunogen:	A synthetic phosphor-peptide corresponding to residues surrounding Thr180 and Tyr182 of human phospho p38MAPK		
Description:	P38 mitogen-activated protein kinase (MAPK) is a stress-activated serine/threonine protein kinase and belongs to the MAP kinase superfamily. Various stress stimuli such as ultraviolet light, irradiation, heat shock, proinflammatory cytokines, mitogens, and high osmotic stress can activate p38 MAPK through phosphorylation of a TGY motif within the kinase activation loop (1). This event plays an improtant role in cell differentiation, apoptosis and autophagy. MKK3 and SEK activate p38 MAPK by phosphorylation at Thr-180 and Tyr-182. Activated p38 MAPK has been shown to phosphorylate and activate MAPKAP kinase 2 and to phosphorylate the transcription factors ATF2, Mac and MEF2. p38 MAPK also has been shown to phosphorylate post-transcriptional regulating factors like TTP (2).		
References:	(1) Corre I, Paris F, Huot J. (2017) Oncotarget. 8:55684-55714. (2) Tudor C, Marchese FP, Hitti E, et al. (2009) FEBS Letters. 583: 1933-1938.		



Flow cytometric analysis of C6 cells unstained and untreated (blue) or stained and untreated (red) or stained and treated with staurosporine (green) using phospho-p38 MAPK (Thr180/Tyr182) antibody P38MAPKT180Y182-E3 SureLight488 conjugate. Cat. #1160.