

Phospho-Stat6 (Tyr641) (G12) rabbit mAb SureLight 488 conjugate

www.abwizbio.com

Support: info@abwizbio.com

Order: sales@abwizbio.com

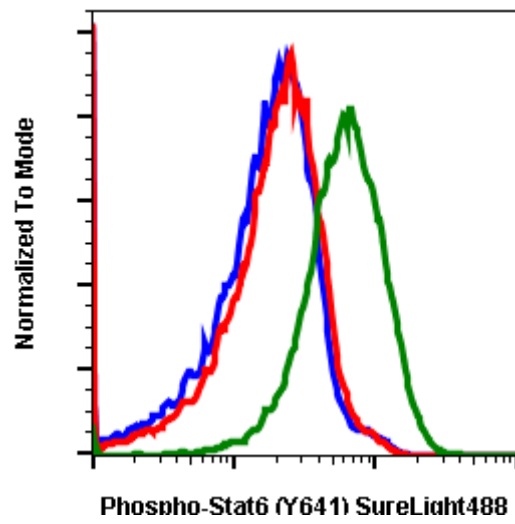
Catalog: #1150

Store at: 2-8°C

For Research Use Only. Not For Use In Diagnostic Procedures.

Applications	Detection	Clonality	Isotype
Flow Cytometry	N/A	Monoclonal	Rabbit IgGk

Format:	SureLight 488
Cross Reactivity:	Predicted to work with mouse, rat and other homologues.
Formulation:	1X PBS, 0.09% NaN ₃ , 0.2% BSA
Preparation:	Protein A+G
Reactivity:	Human,Mouse
Recommended Usage:	For flow cytometric staining, the suggested use of this reagent is 5 µL per million cells or 5 µL per 100 µL of staining volume. It is recommended that the reagent be titrated for optimal performance for each application.
Immunogen:	A synthetic phospho-peptide corresponding to residues surrounding Tyr641 of human phospho Stat6
Description:	The transcription factor Stat6 is a member of the signal transducers and activators of transcription (STAT) family of proteins. Stat6 is the only member of this family that is activated by interleukin-4 (IL-4), after which Stat6 is both tyrosine- and serine-phosphorylated by Jak kinases. The consensus Stat6 binding site TTCN4GAA is found in the promoters of many genes regulated by IL-4. In T lymphocytes, Stat6 is required for differentiation into Th2 cells in response to IL-4. Stat6 may play a role in solid tumorigenesis; a large immunohistochemistry study of Stat6 expression in over 2,000 tumor samples confirmed strong nuclear staining.
References:	Kaplan MH, Schindler U, Smiley ST, and Grusby MJ. (1996) Immunity. 4:313-319. Demicco EG, Harms PW, Patel RM, et al. (2015) American Journal of Clinical Pathology. 143:672-682. Wick KR, and Berton MT. (2000) Molecular Immunology. 37:641-652.



Flow cytometric analysis of U937 cells untreated cells stained with secondary antibody as negative control (blue) or untreated (red) or treated with IFNα and IL-4 (green) using Phospho-Stat6 (Tyr641)-SureLight 488 antibody STAT6Y641-G12 SureLight 488. Cat. #1150.